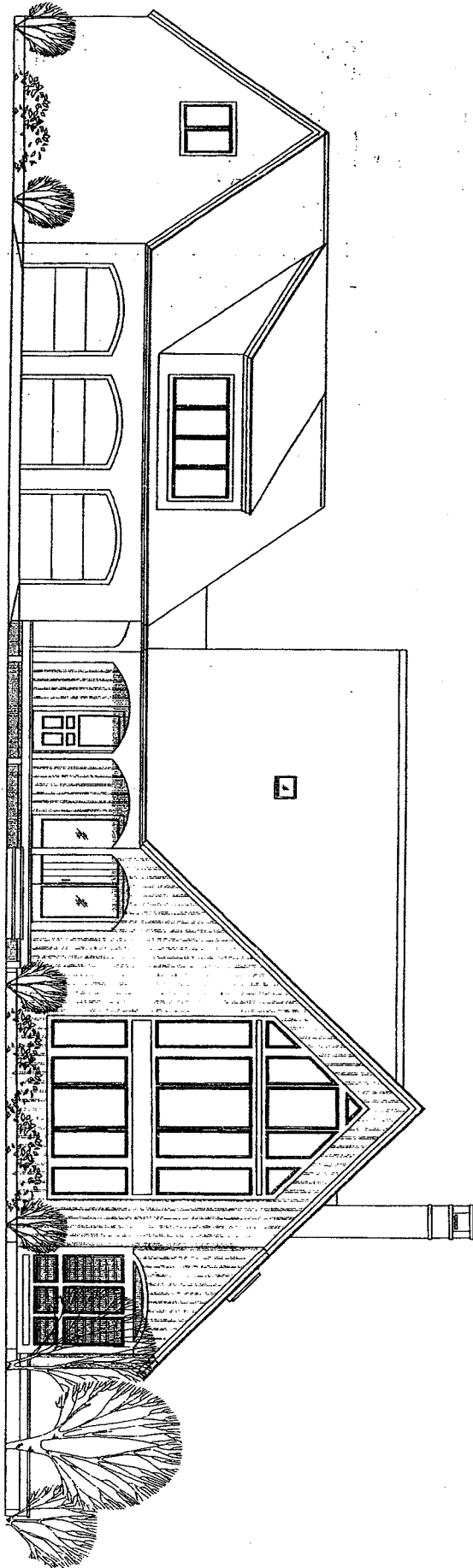


NEW RESIDENCE FOR:
STANLEY J. ISBITSKI
SALISBURY, NH



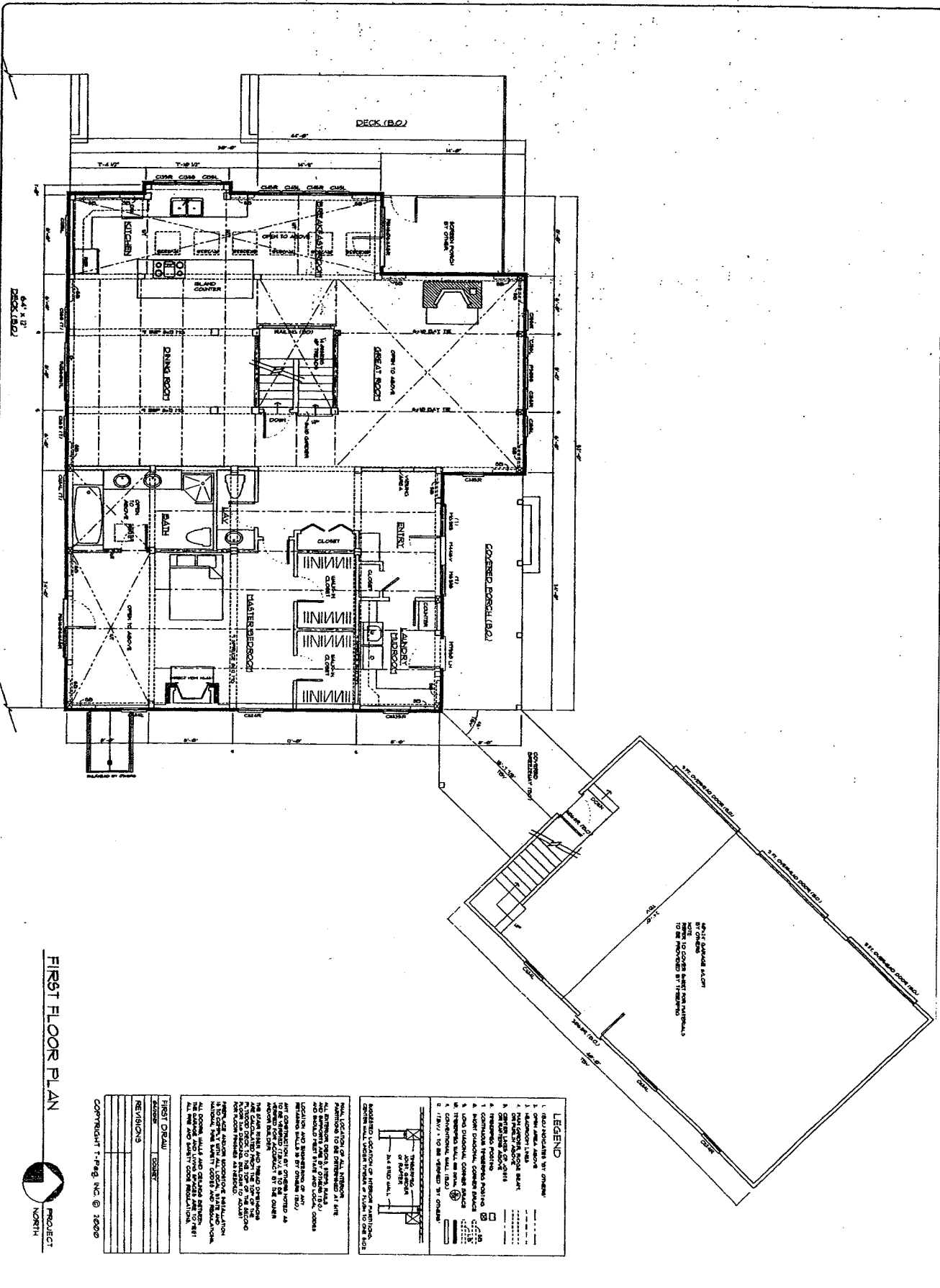
TIMBERPEG®

The Artisans of Post & Beam

INDEPENDENT REPRESENTATIVE OLD HARTFORD DESIGN

TIM000454

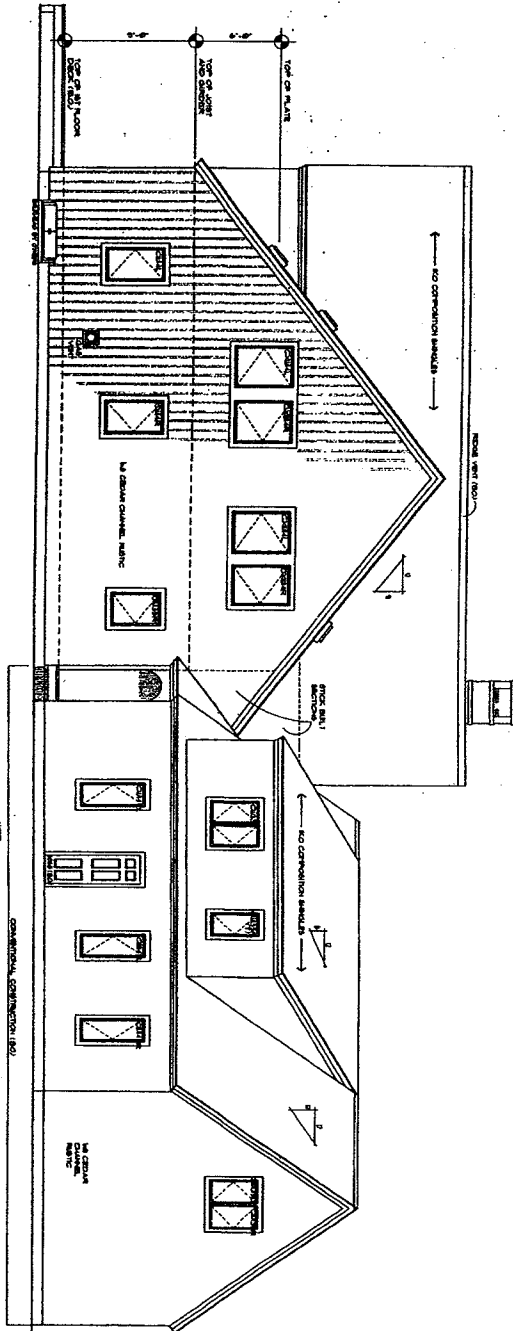
NO. 00-71
TIMBERPEG



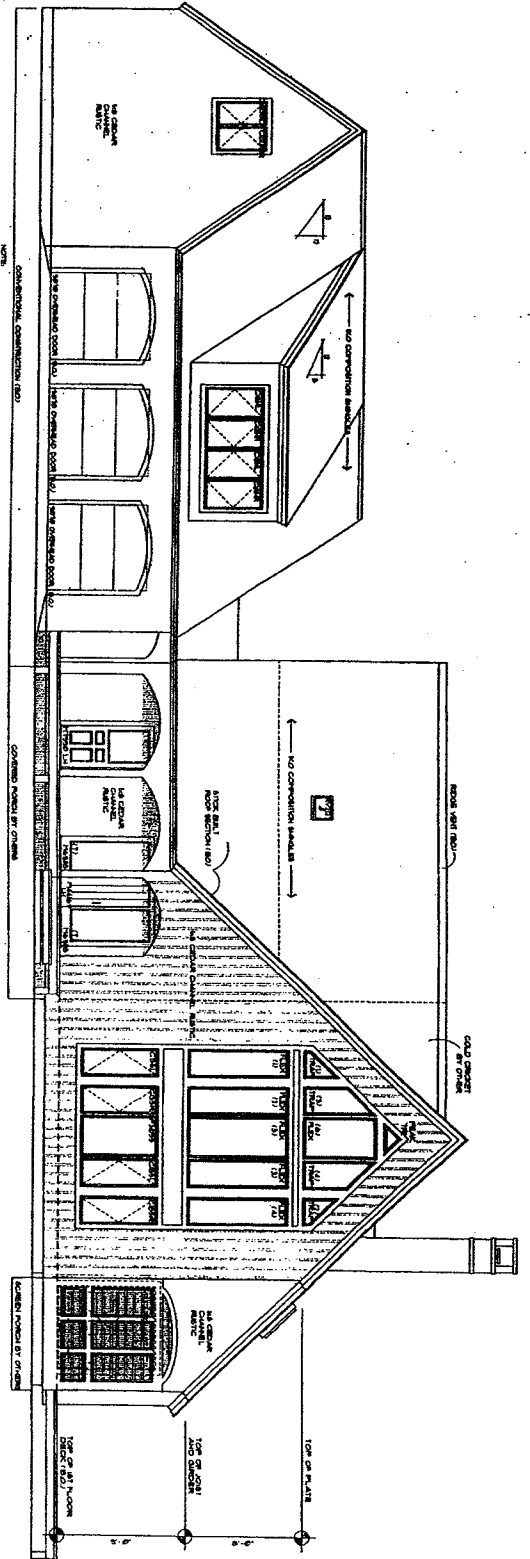
TJM000455

E:\DWG\2007\WORK\04\0434\1807\20434 180785-04.XL01.dwg, E1, 04/28/07 07:01:04 AM, DRAWN BY:LD

EAST ELEVATION



NORTH ELEVATION



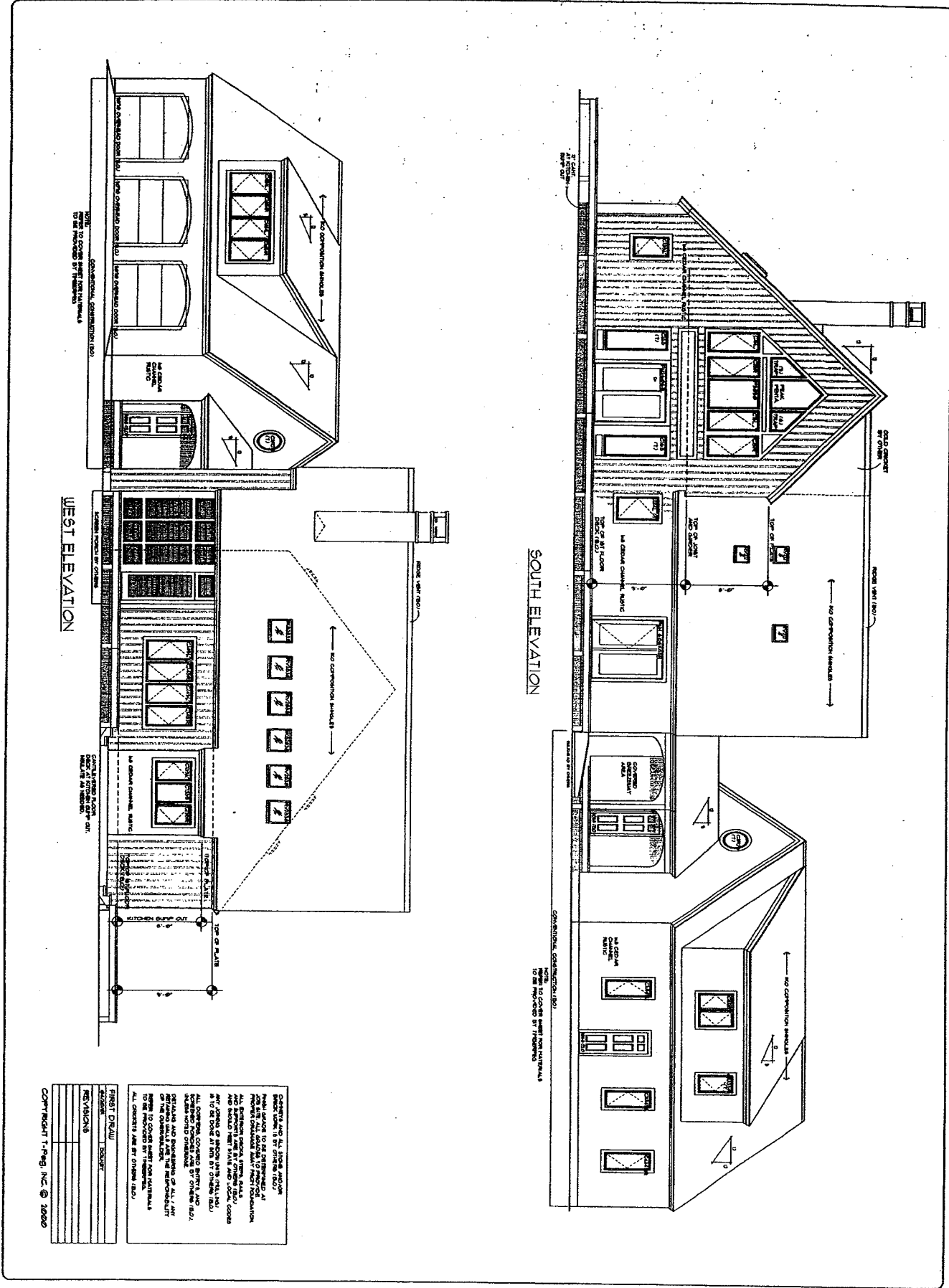
PROJECT	180785-04
DATE	04/28/07
REVISIONS	

GENERAL NOTES:
 1. ALL DIMENSIONS ARE TO FACE UNLESS NOTED OTHERWISE.
 2. FINISH GRADE SHALL BE AS SHOWN.
 3. ALL MATERIALS SHALL BE AS SHOWN.
 4. ALL MATERIALS SHALL BE APPROVED BY THE ARCHITECT.
 5. ALL MATERIALS SHALL BE INSTALLED IN ACCORDANCE WITH THE MANUFACTURER'S INSTRUCTIONS.
 6. ALL MATERIALS SHALL BE INSTALLED IN ACCORDANCE WITH THE MANUFACTURER'S INSTRUCTIONS.
 7. ALL MATERIALS SHALL BE INSTALLED IN ACCORDANCE WITH THE MANUFACTURER'S INSTRUCTIONS.
 8. ALL MATERIALS SHALL BE INSTALLED IN ACCORDANCE WITH THE MANUFACTURER'S INSTRUCTIONS.
 9. ALL MATERIALS SHALL BE INSTALLED IN ACCORDANCE WITH THE MANUFACTURER'S INSTRUCTIONS.
 10. ALL MATERIALS SHALL BE INSTALLED IN ACCORDANCE WITH THE MANUFACTURER'S INSTRUCTIONS.
 11. ALL MATERIALS SHALL BE INSTALLED IN ACCORDANCE WITH THE MANUFACTURER'S INSTRUCTIONS.
 12. ALL MATERIALS SHALL BE INSTALLED IN ACCORDANCE WITH THE MANUFACTURER'S INSTRUCTIONS.
 13. ALL MATERIALS SHALL BE INSTALLED IN ACCORDANCE WITH THE MANUFACTURER'S INSTRUCTIONS.
 14. ALL MATERIALS SHALL BE INSTALLED IN ACCORDANCE WITH THE MANUFACTURER'S INSTRUCTIONS.
 15. ALL MATERIALS SHALL BE INSTALLED IN ACCORDANCE WITH THE MANUFACTURER'S INSTRUCTIONS.
 16. ALL MATERIALS SHALL BE INSTALLED IN ACCORDANCE WITH THE MANUFACTURER'S INSTRUCTIONS.
 17. ALL MATERIALS SHALL BE INSTALLED IN ACCORDANCE WITH THE MANUFACTURER'S INSTRUCTIONS.
 18. ALL MATERIALS SHALL BE INSTALLED IN ACCORDANCE WITH THE MANUFACTURER'S INSTRUCTIONS.
 19. ALL MATERIALS SHALL BE INSTALLED IN ACCORDANCE WITH THE MANUFACTURER'S INSTRUCTIONS.
 20. ALL MATERIALS SHALL BE INSTALLED IN ACCORDANCE WITH THE MANUFACTURER'S INSTRUCTIONS.

Copyright © 2006

TIM000457

<p>THIS DRAWING IS THE PROPERTY OF TIMBERPEG INC. IT IS TO BE USED ONLY FOR THE PROJECT AND SITE SPECIFICALLY IDENTIFIED HEREON. IT IS NOT TO BE REPRODUCED OR COPIED IN ANY MANNER WITHOUT THE WRITTEN PERMISSION OF TIMBERPEG INC. COPYRIGHT © 2006 TIMBERPEG INC.</p>	<p>TIMBERPEG The Artisans of Post & Beam</p>	<p>SCALE: 1/4" = 1'-0" DO NOT SCALE DIMENSIONS FROM BLUEPRINTS</p>	<p>STANLEY J. ISBITSKI ELEVATIONS P26K&L, P28K&L</p>
--	---	--	--



GENERAL NOTES:

1. ALL DIMENSIONS, UNLESS OTHERWISE NOTED, ARE IN FEET AND INCHES. DIMENSIONS ARE TO FACE UNLESS OTHERWISE NOTED.

2. ALL DIMENSIONS, UNLESS OTHERWISE NOTED, ARE TO FACE UNLESS OTHERWISE NOTED.

3. ALL DIMENSIONS, UNLESS OTHERWISE NOTED, ARE TO FACE UNLESS OTHERWISE NOTED.

4. ALL DIMENSIONS, UNLESS OTHERWISE NOTED, ARE TO FACE UNLESS OTHERWISE NOTED.

5. ALL DIMENSIONS, UNLESS OTHERWISE NOTED, ARE TO FACE UNLESS OTHERWISE NOTED.

6. ALL DIMENSIONS, UNLESS OTHERWISE NOTED, ARE TO FACE UNLESS OTHERWISE NOTED.

7. ALL DIMENSIONS, UNLESS OTHERWISE NOTED, ARE TO FACE UNLESS OTHERWISE NOTED.

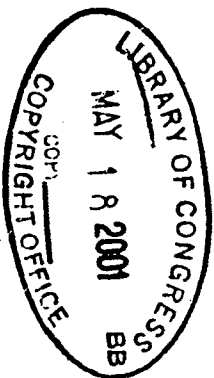
8. ALL DIMENSIONS, UNLESS OTHERWISE NOTED, ARE TO FACE UNLESS OTHERWISE NOTED.

9. ALL DIMENSIONS, UNLESS OTHERWISE NOTED, ARE TO FACE UNLESS OTHERWISE NOTED.

10. ALL DIMENSIONS, UNLESS OTHERWISE NOTED, ARE TO FACE UNLESS OTHERWISE NOTED.

TIM0000458

<p>DATE: 10/15/03</p> <p>PROJECT: 1-Peg</p> <p>REVISIONS:</p> <p>1. 10/15/03</p>	<p>THIS DRAWING IS NOT TO BE REPRODUCED OR COPIED IN WHOLE OR IN PART WITHOUT THE EXPRESS WRITTEN PERMISSION OF T-PEG, INC. COPYRIGHT © 2003 T-PEG, INC.</p>	<p>TIMBERPEG EAST, INC. CLARENCE, NH TIMBERPEG SOUTH, INC. FLETCHER, NC TIMBERPEG WEST, INC. FT. COLLINS, CO TIMBERPEG PACIFIC, INC. REDDING, CA</p>	<p>TIMBERPEG The Artisans of Post & Beam</p>	<p>SCALE: 1/4" = 1'-0"</p> <p>DO NOT SCALE EXTENSIONS FROM BLUEPRINTS</p>	<p>STANLEY J. ISBITSKI ELEVATIONS P20K-01, P28K-01</p>
--	--	--	---	---	--



TIM000459