

The Yankee Barn Show Home was created in partnership with *HOME* magazine and featured in their February 1997 issue. The home starts with a Prairie Barn frame with three floors of space. The Great Room soars above a wall of windows to a cathedral ceiling. A central fireplace opens to both the Great Room and the dining room. The kitchen is the center of activity connected to both the Great Room and the dining room and designed to include the cook in the gathering. A soundproofed media room, private computer room/office, balconies, third floor loft, and two guest bedrooms meet the needs of a busy extended family, while downstairs the heads of the household can retreat to the master bedroom suite located in its own wing.

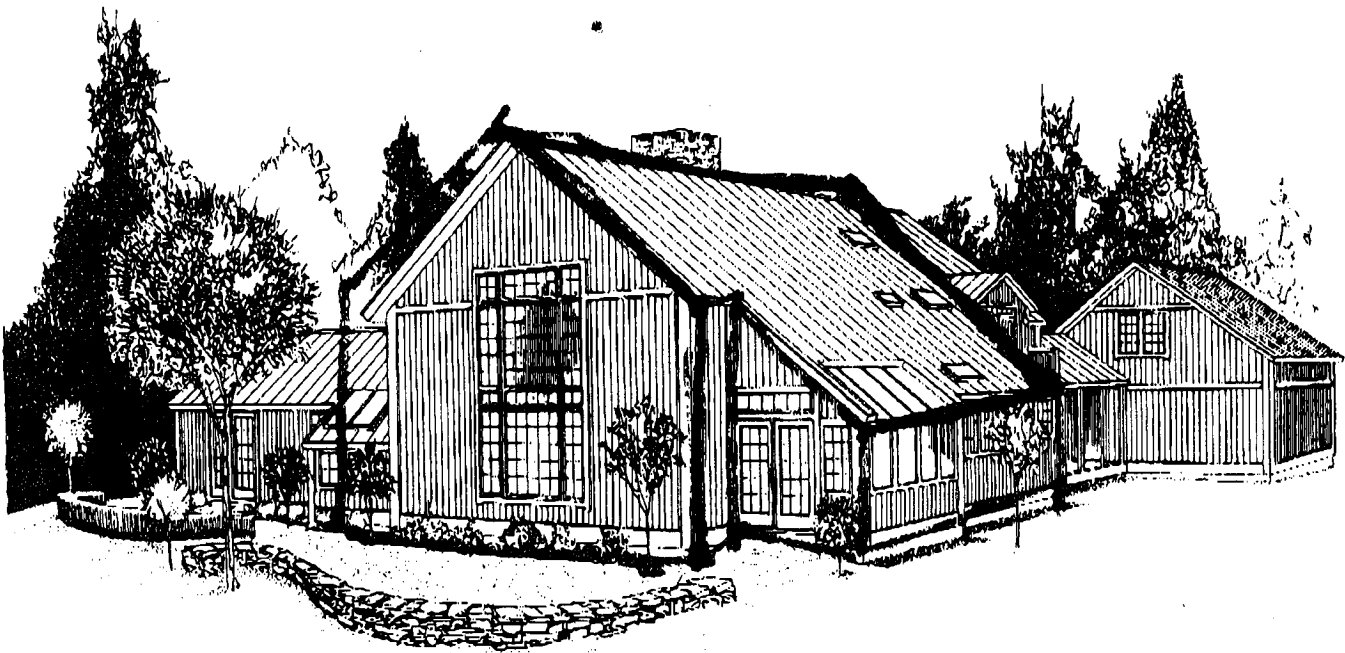
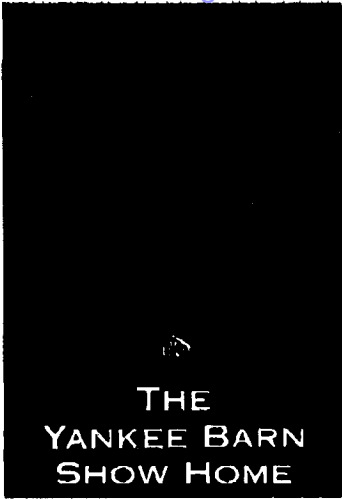
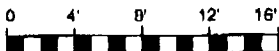
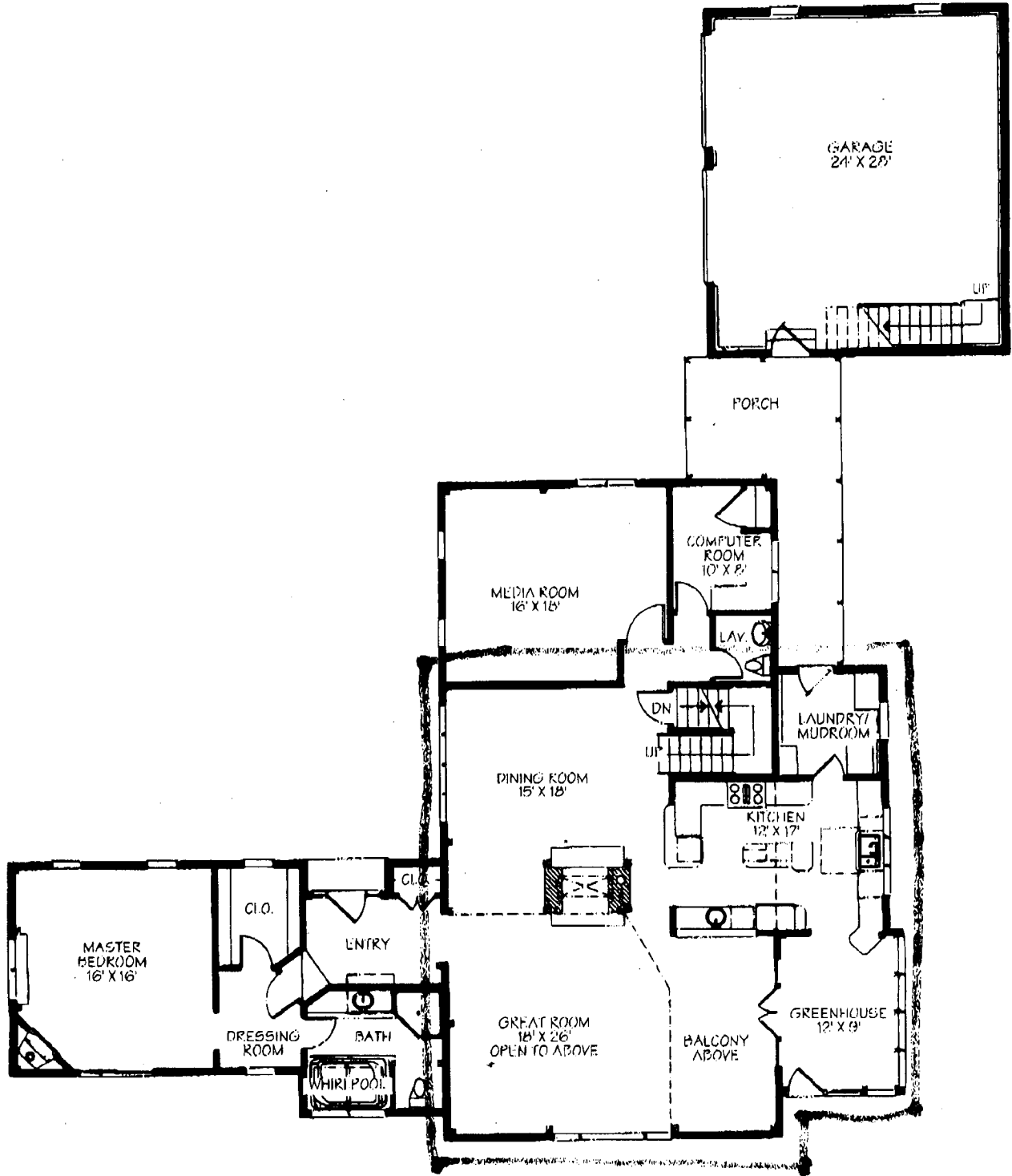


EXHIBIT  
9

# THE YANKEE BARN SHOW HOME FIRST FLOOR

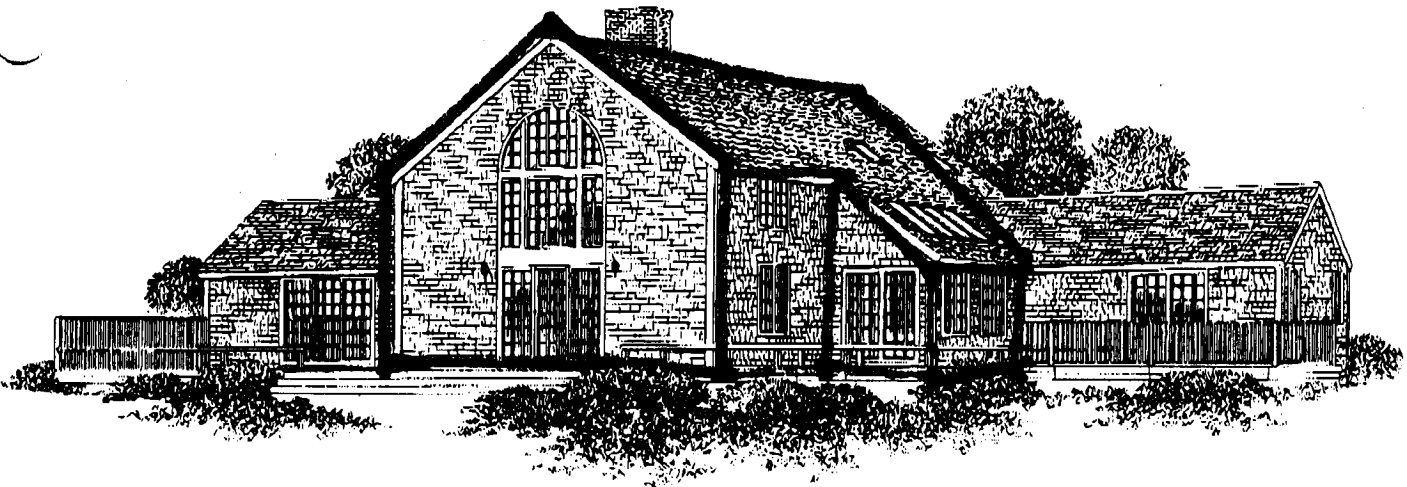
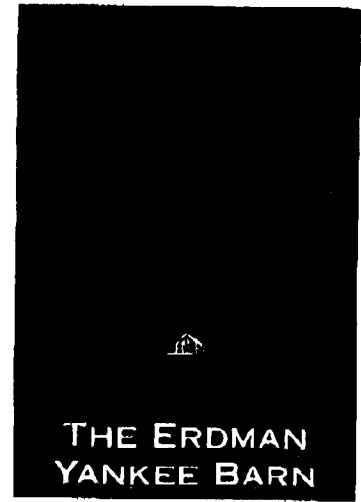
2



SCALE 3/32" = 1'

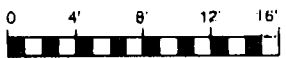
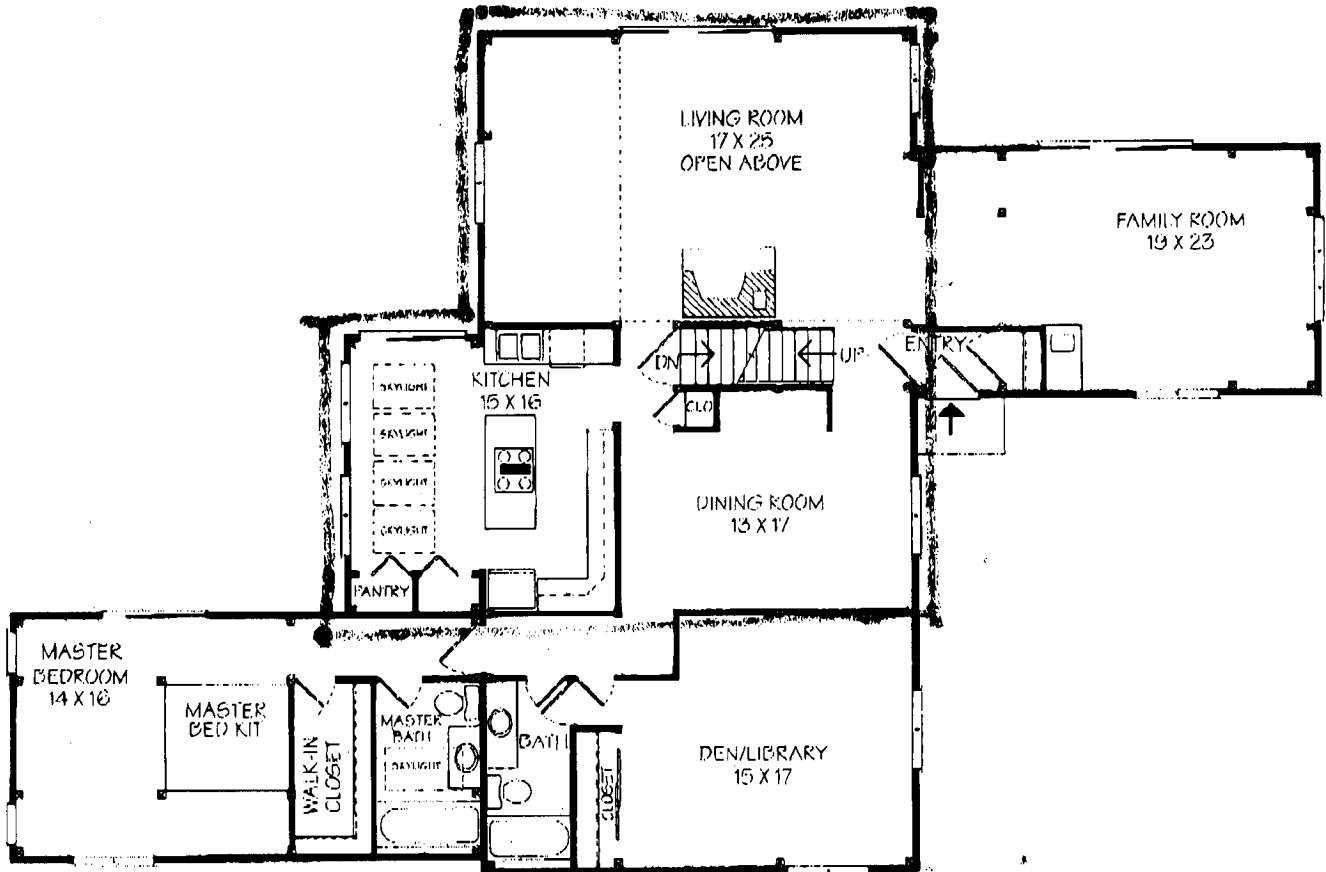


Cal and Bobbi Erdman wanted their vacation home to provide plenty of room for guests to relax, roam around the house, and enjoy the view across the Atlantic Ocean to Martha's Vineyard. They started their award-winning design with a Mark I frame to enclose a large living room with cathedral ceiling and massive fireplace and chimney, a dining room just the right size for entertaining, a den, and the kitchen. To add space for entertaining and relaxing, Cal and Bobbi added a family room in an ell off the living room. They also added another ell for a private master bedroom suite and a granary to give Bobbi more space and light in the kitchen. Upstairs, there are two bedrooms and a playroom.



2

# ERDMAN FIRST FLOOR



SCALE 3/32" = 1'

