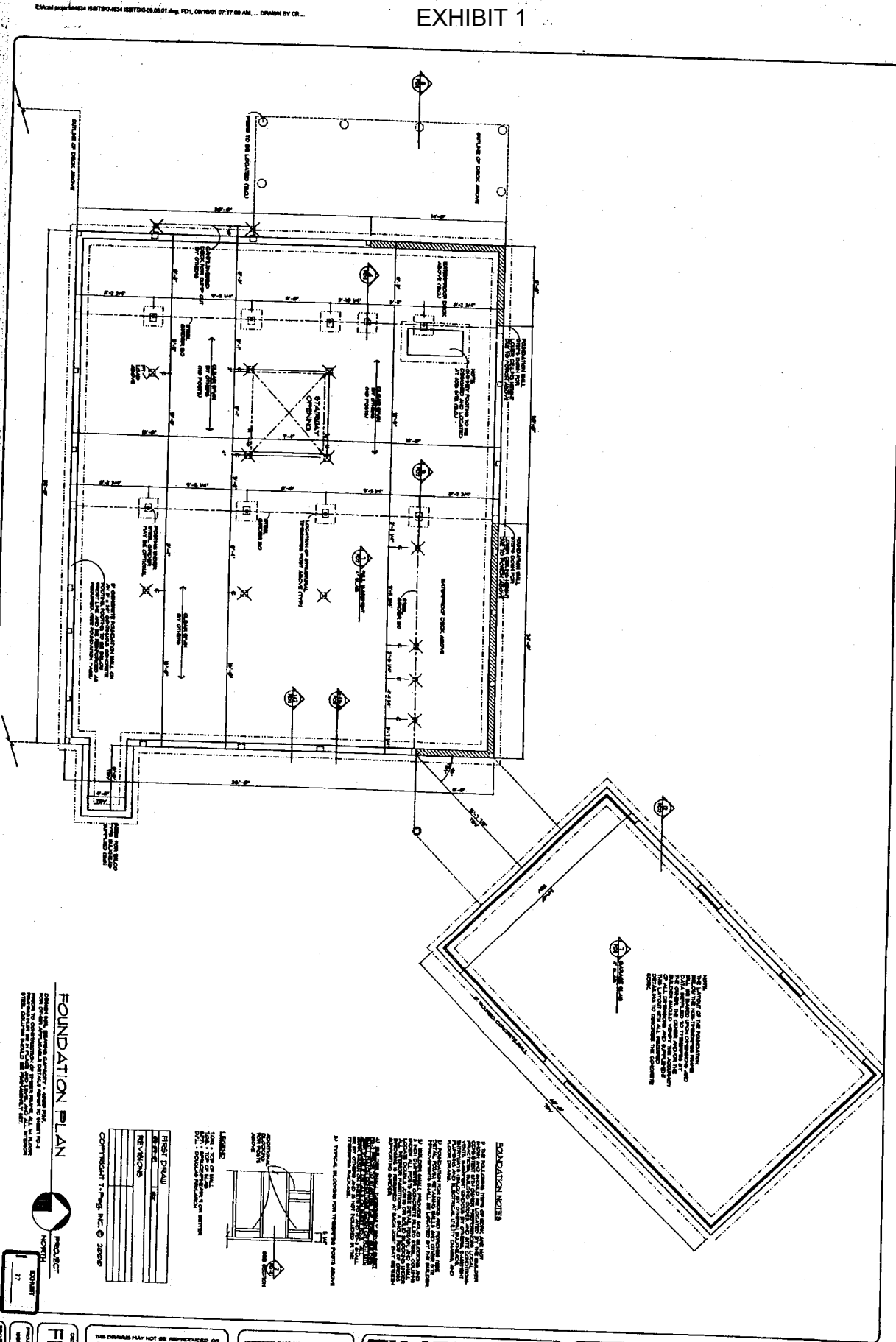


EXHIBIT 1

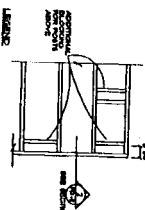
DEFENDANT'S  
EXHIBIT  
L  
1:03-CV-462



FOUNDATION PLAN



PROJECT	NO. 27
DATE	
REVISIONS	
DATE	
BY	
CHKD BY	



FOUNDATION NOTES

1. ALL FOUNDATION DIMENSIONS ARE TO FACE UNLESS OTHERWISE NOTED.

2. ALL FOUNDATION DIMENSIONS ARE TO FACE UNLESS OTHERWISE NOTED.

3. ALL FOUNDATION DIMENSIONS ARE TO FACE UNLESS OTHERWISE NOTED.

4. ALL FOUNDATION DIMENSIONS ARE TO FACE UNLESS OTHERWISE NOTED.

5. ALL FOUNDATION DIMENSIONS ARE TO FACE UNLESS OTHERWISE NOTED.

6. ALL FOUNDATION DIMENSIONS ARE TO FACE UNLESS OTHERWISE NOTED.

7. ALL FOUNDATION DIMENSIONS ARE TO FACE UNLESS OTHERWISE NOTED.

8. ALL FOUNDATION DIMENSIONS ARE TO FACE UNLESS OTHERWISE NOTED.

9. ALL FOUNDATION DIMENSIONS ARE TO FACE UNLESS OTHERWISE NOTED.

10. ALL FOUNDATION DIMENSIONS ARE TO FACE UNLESS OTHERWISE NOTED.

**TIMBERPEG**  
The Artisans of Post & Beam

SCALE 1/4" = 1'-0"  
DO NOT SCALE  
DIMENSIONS  
FROM BLUEPRINTS

STANLEY J. ISBITSKI  
FOUNDATION PLAN  
20' BENT K8 @ 8' 6HED, P20K6 @ 8' 6HED @

THIS DRAWING MAY NOT BE REPRODUCED OR  
COPIED IN WHOLE OR IN PART, WITHOUT THE  
WRITTEN PERMISSION OF TIMBERPEG, INC.  
COPYRIGHT © 2001 T-PEG, INC.

TIMBERPEG EAST INC. CLAYTON, OH  
TIMBERPEG SOUTH INC. FLETCHER, NC  
TIMBERPEG WEST INC. COLEMAN, CO.  
TIMBERPEG PACIFIC INC. BEND, OR

FDI  
PROJECT NO. 27  
DATE