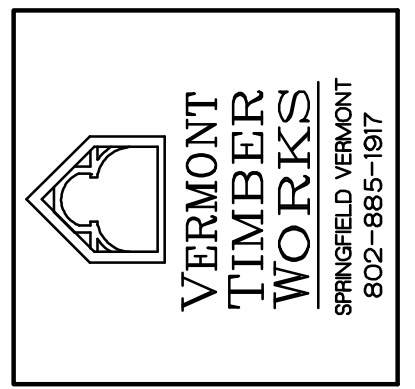
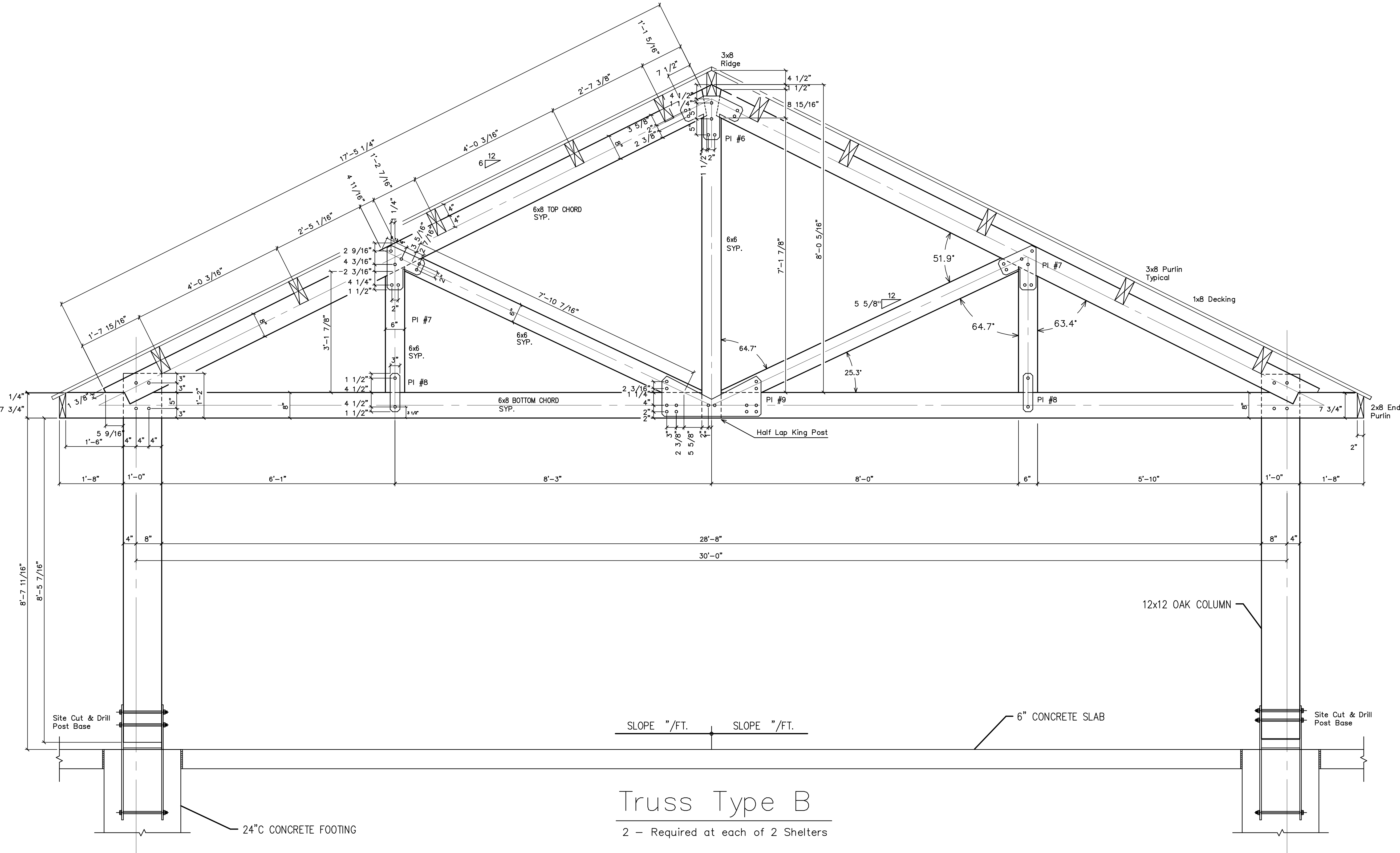


REVISIONS	BY
9/9/04	

General Notes:
 Timbers to be Southern Yellow Pine #1 & Better Rough
 Posts to be Native Red Oak Rough
 One coat of stain or oil to be shop applied on all sides.
 All Bolts to be 3/4" zinc coated.
 All Steel to be shop primed flat black.
 Post Bases By Others



SHOP DRAWINGS
 Truss Type "B"



Truss Type B
 2 - Required at each of 2 Shelters

PROJECT: Fort Harrison State Park
 Picnic Shelter

DRAWN : D.F.	CHECKED :
DATE : 7/2/04	
SCALE : 3/4" = 1'-0"	
JOB NO. :	
SHEET	
F-3	
From Sheets: S403 S405 S404	
OF	SHEETS