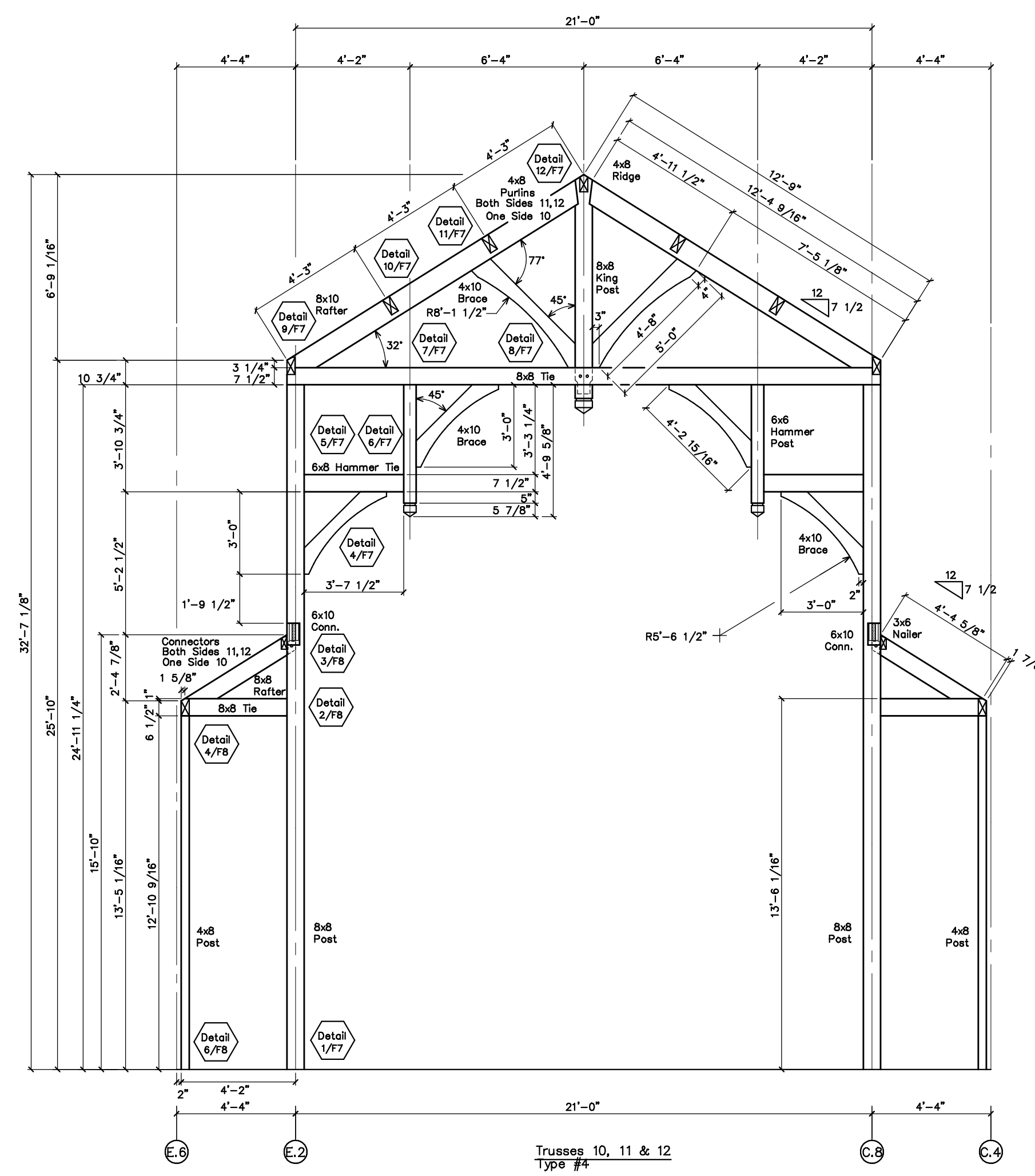
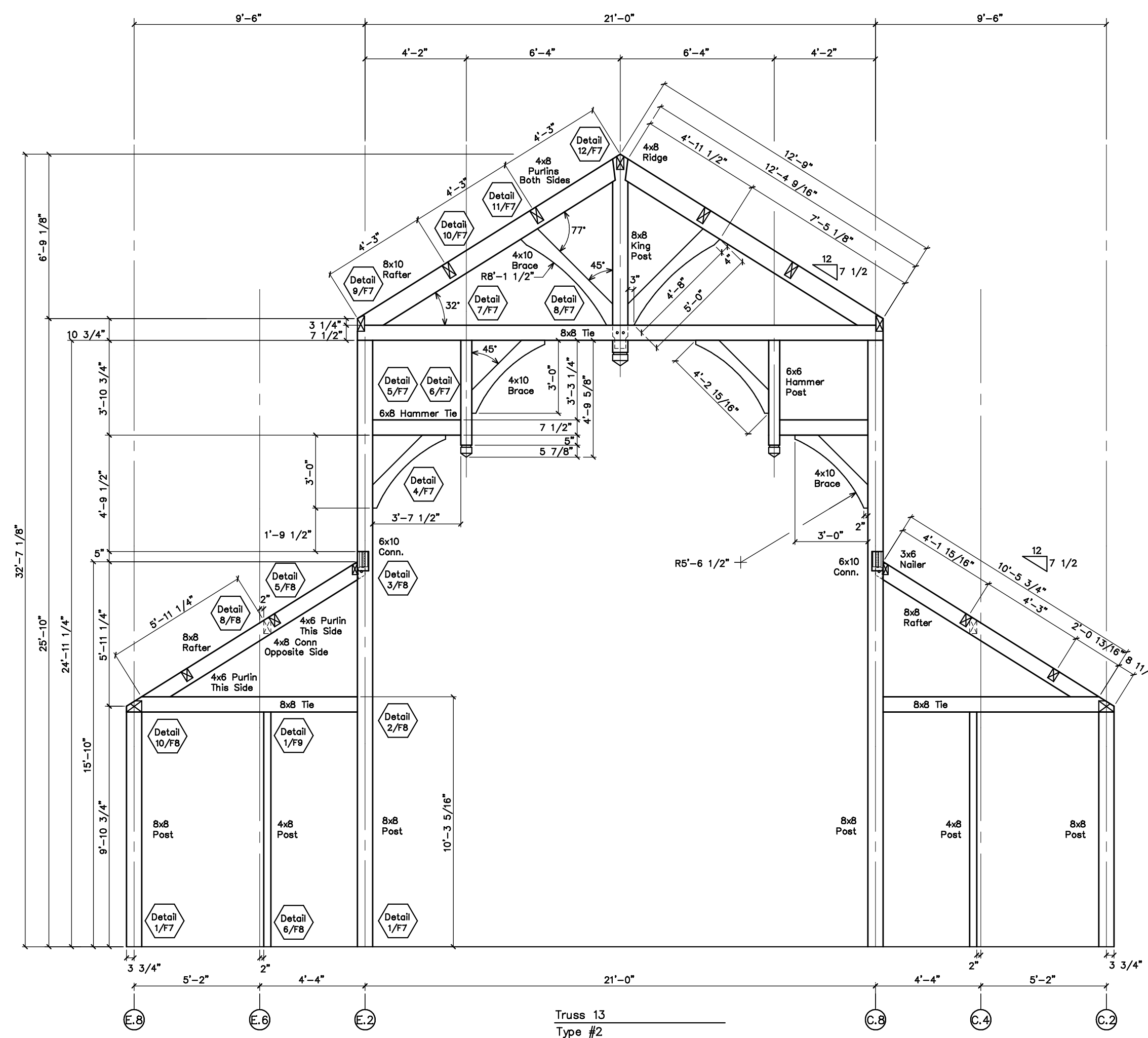


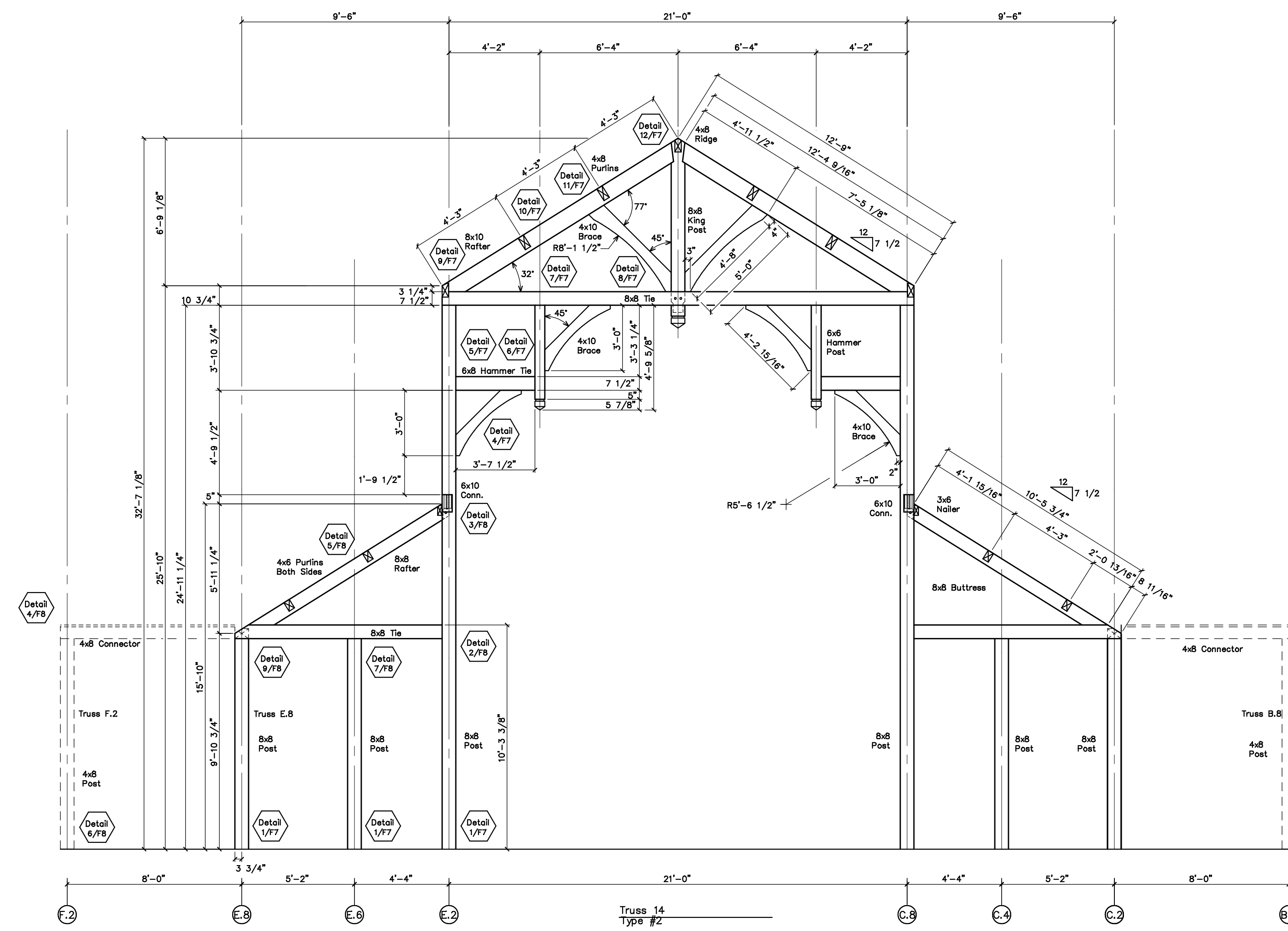
Truss B.8  
Type #2



Trusses 10, 11 & 12  
Type #4



Truss 13  
Type #2



Truss 14  
Type #2

REVISIONS	BY
1/14/03	



SHOP DRAWINGS  
Truss Profiles

Engineering Ventures  
208 Flynn Avenue  
Burlington, VT 05401  
802-863-6225  
802-863-6306 Fax

PROJECT:  
The Bethlehem Monastery  
of Poor Clares  
Timber Frame  
Barhamsville, VA

DRAWN : D.F.	CHECKED :
DATE : 1/8/03	
SCALE : 1/4"=1'-0"	
JOB NO. :	
SHEET	

F-5  
OF SHEETS