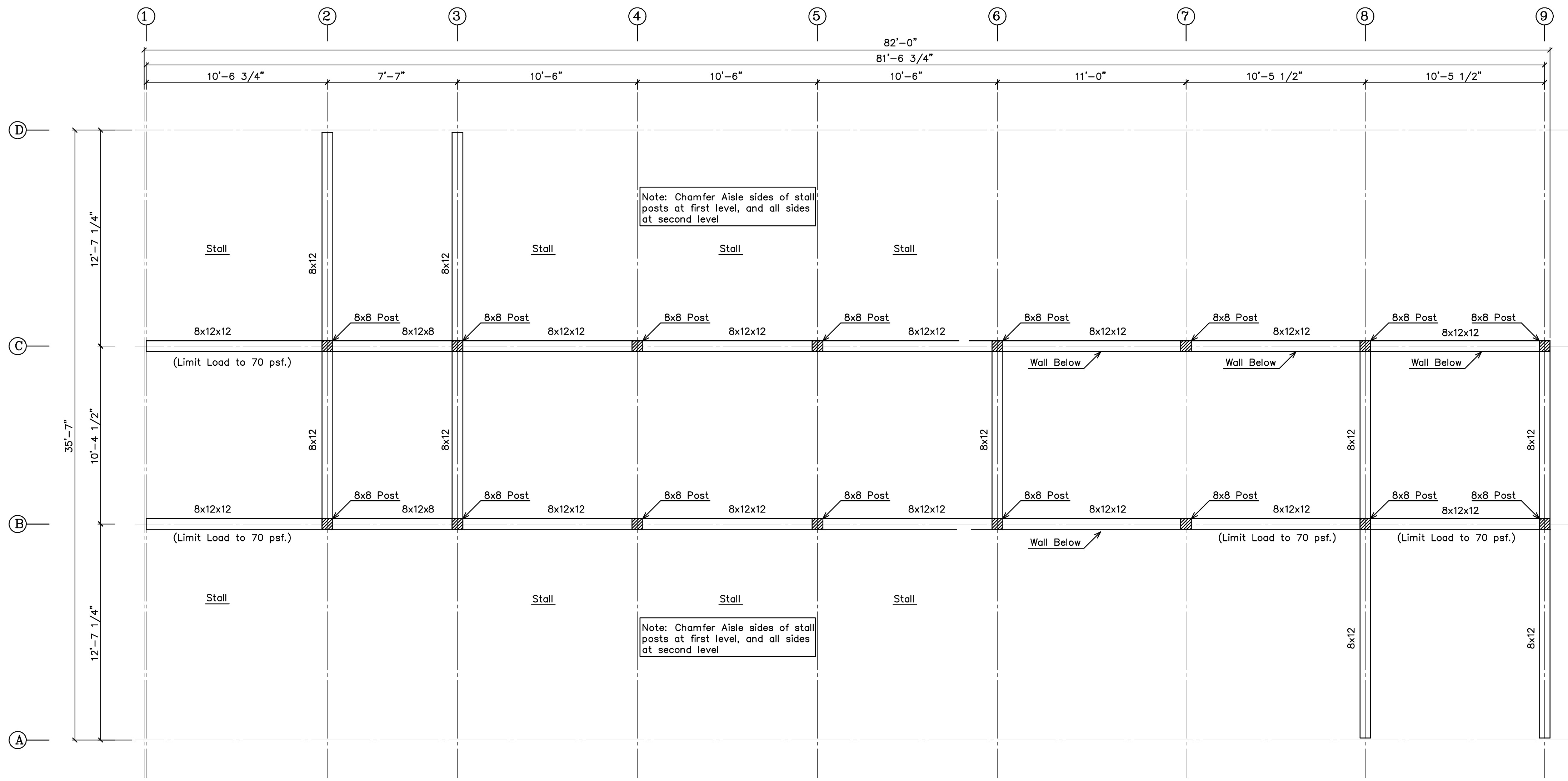
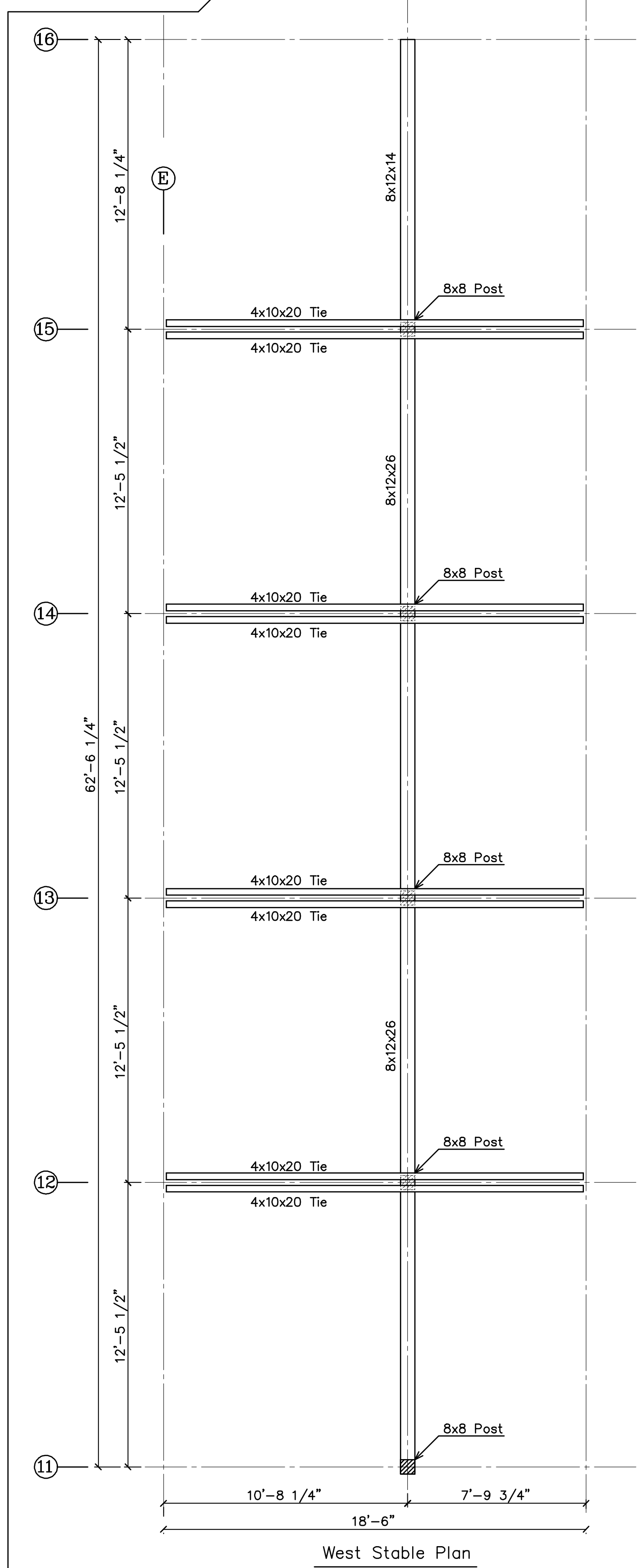


South Stable Plan at Upper Level



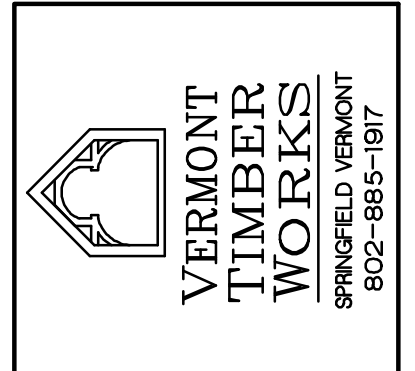
South Stable Plan at Lower Level



West Stable Plan

General Notes:
 Timbers to be Douglas Fir Select Structural S4S
 Pegs to be 1" birch.
 All edges to have 1/2" chamfer
 One coat of urethane to be shop applied on all sides.
 All bolts to be 3/4" zinc coated.
 All Steel to be shop primed flat black.
 Floor live load 100 psf max, or as limited on plan as indicated, thus 70 psf.

REVISIONS	BY
1/11/02	
1/17/02	
3/26/02	



SHOP DRAWINGS
 Stable Plans

Dufresne-Henry
 North, Springfield, VT
 802-226-2260 Fax
 802-886-2260
 www.dufresne-henry.com

PROJECT: Kenney Stable
 Martha's Vineyard, MA

DRAWN : D.F.	CHECKED :
DATE : 12/07/01	
SCALE : 1/4" = 1'-0"	
JOB NO. :	
SHEET	
F-2	
OF	SHEETS