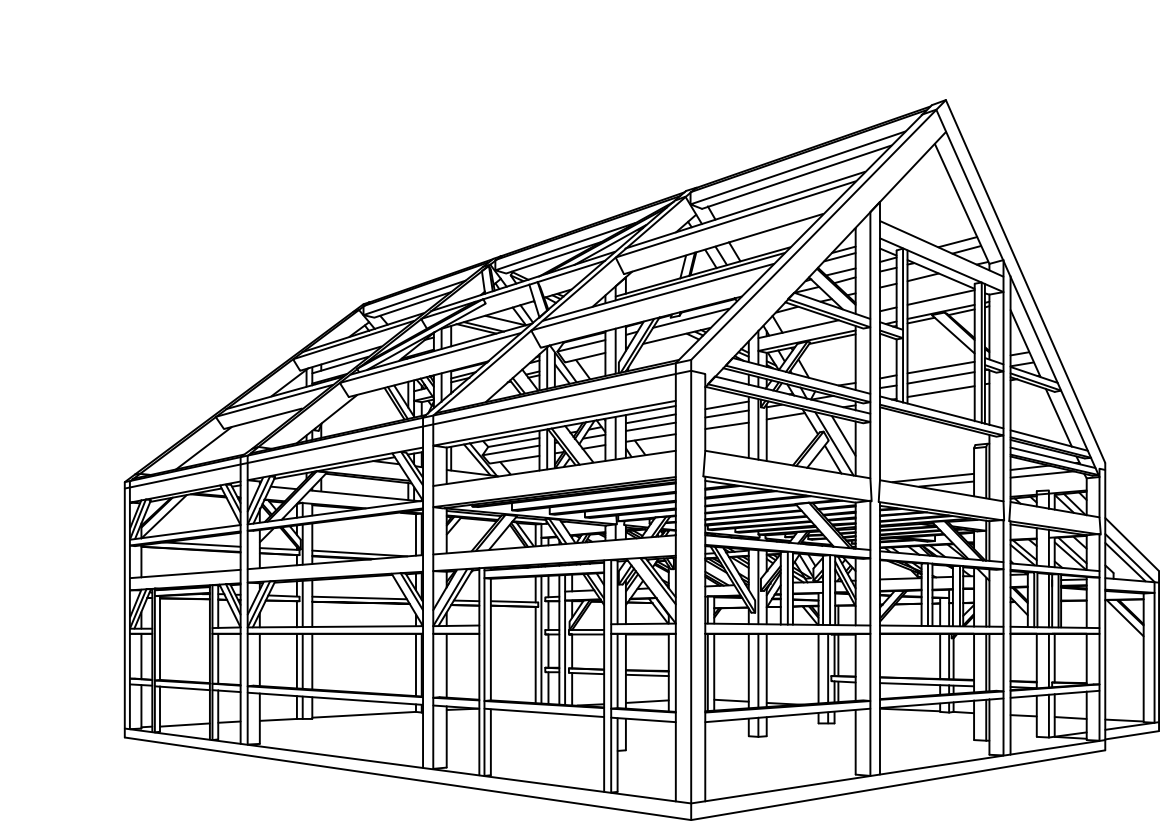
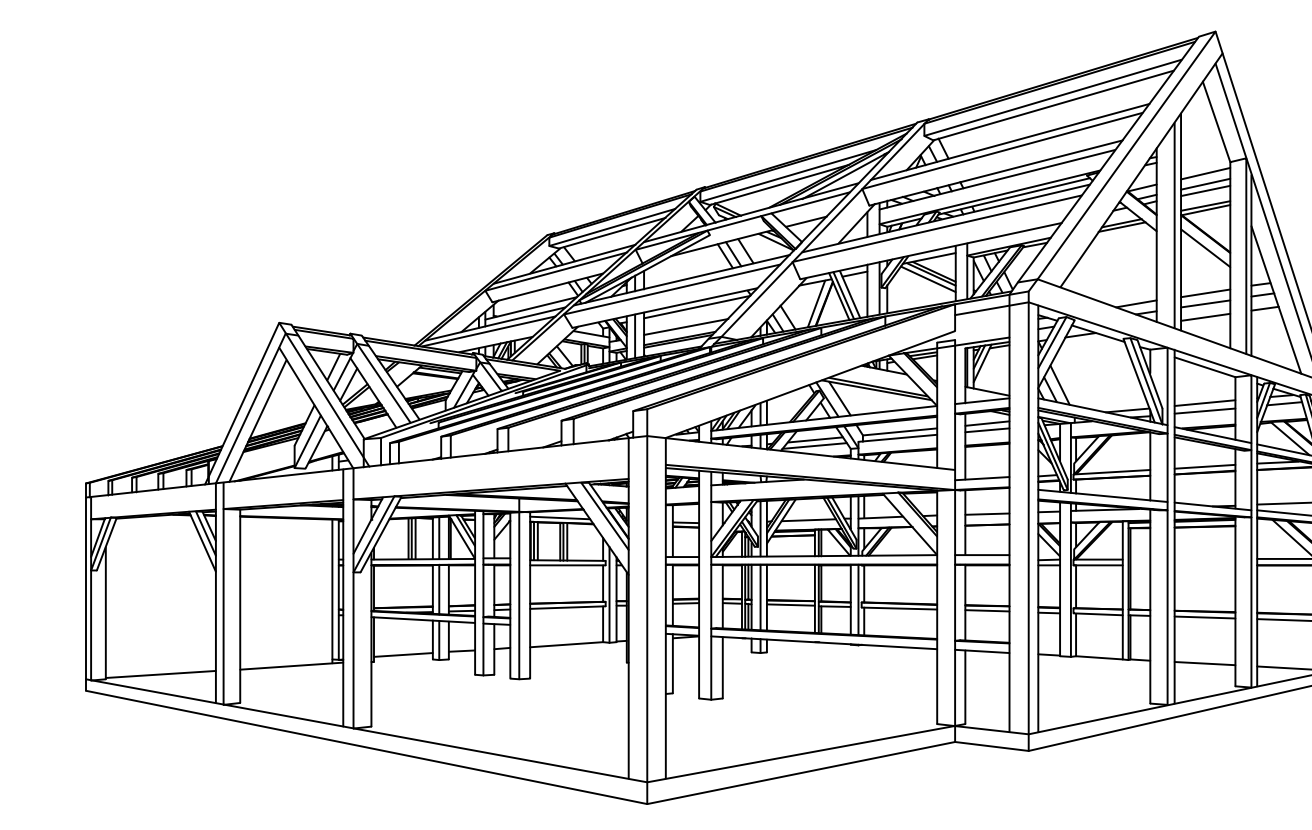
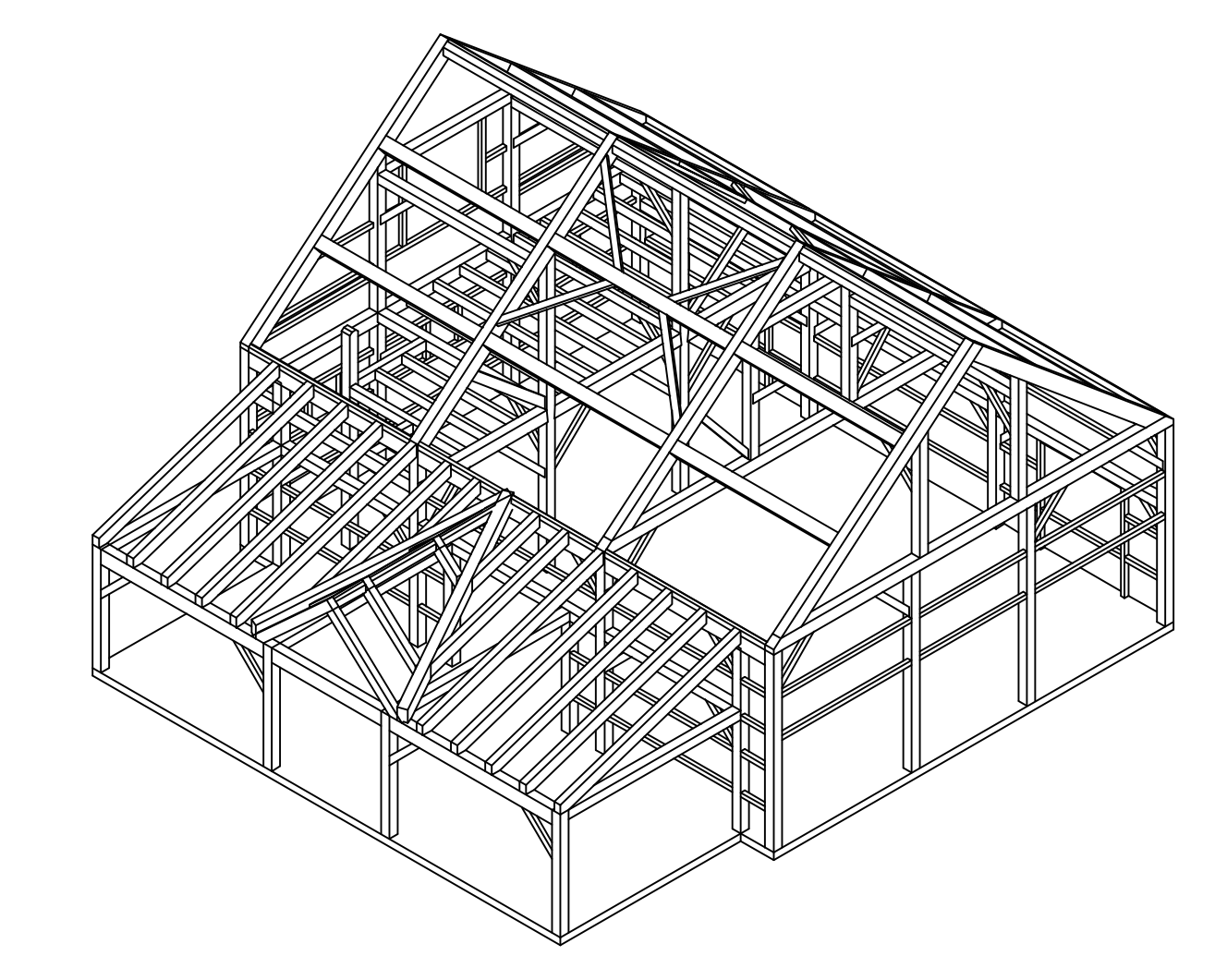
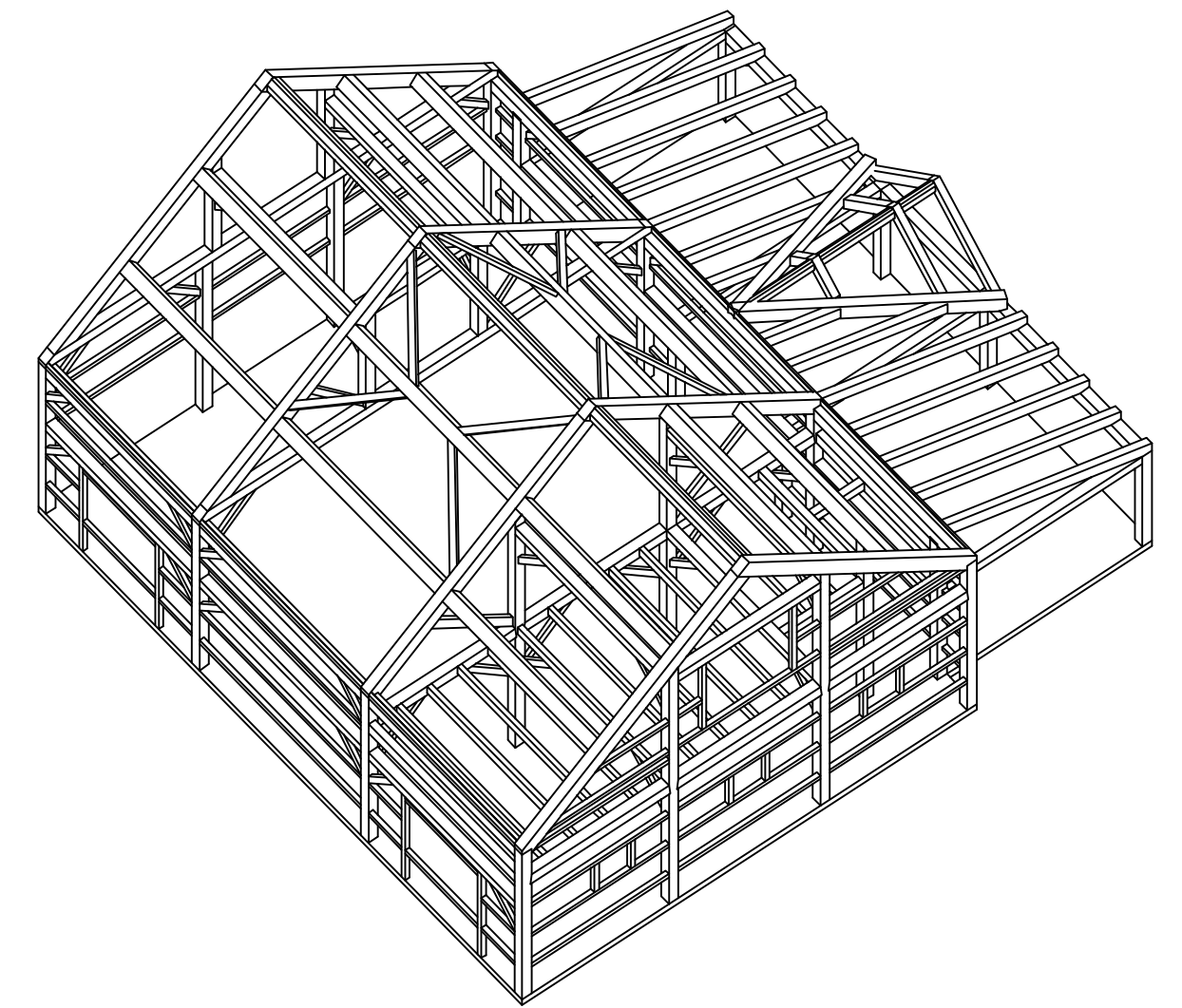
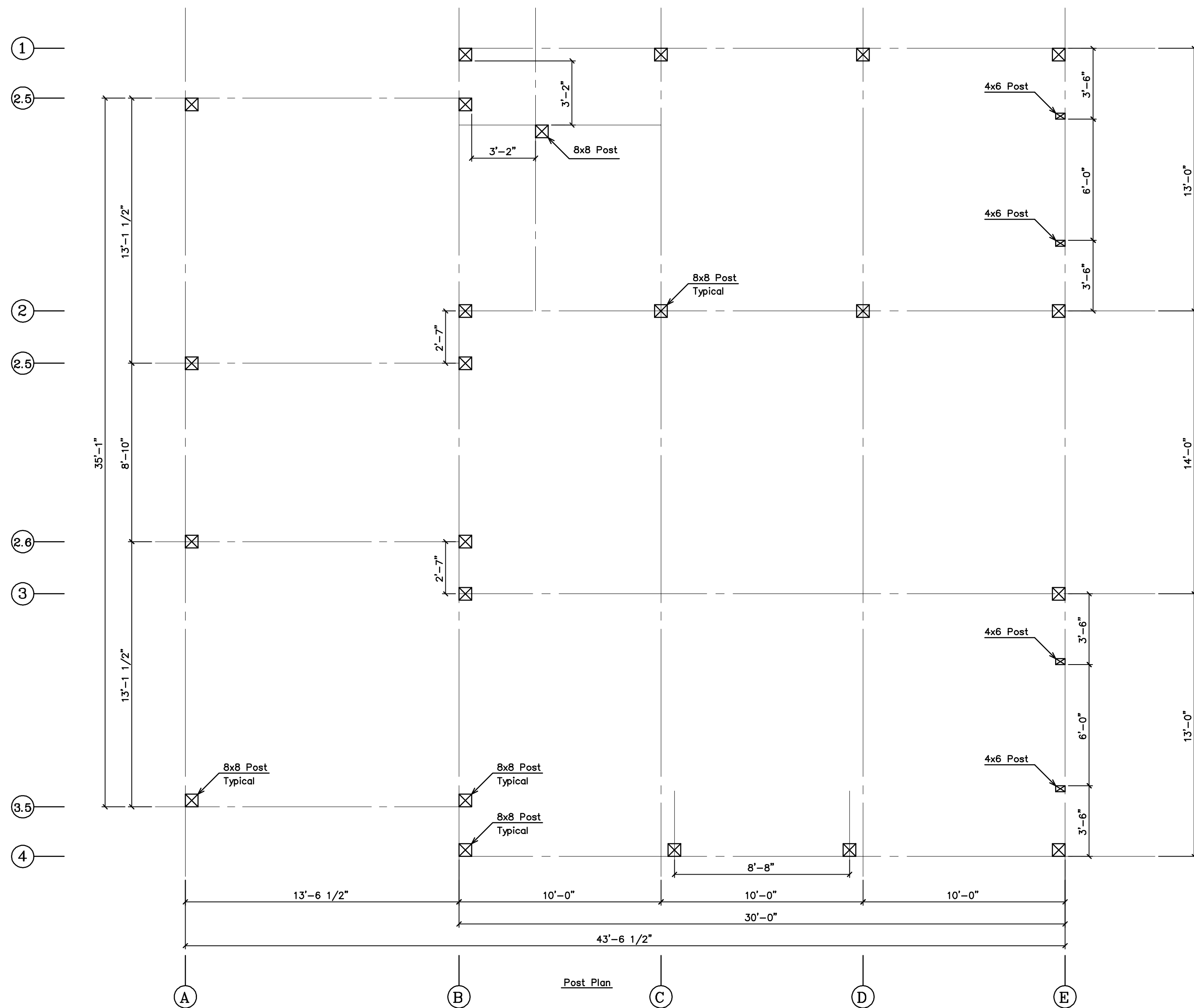
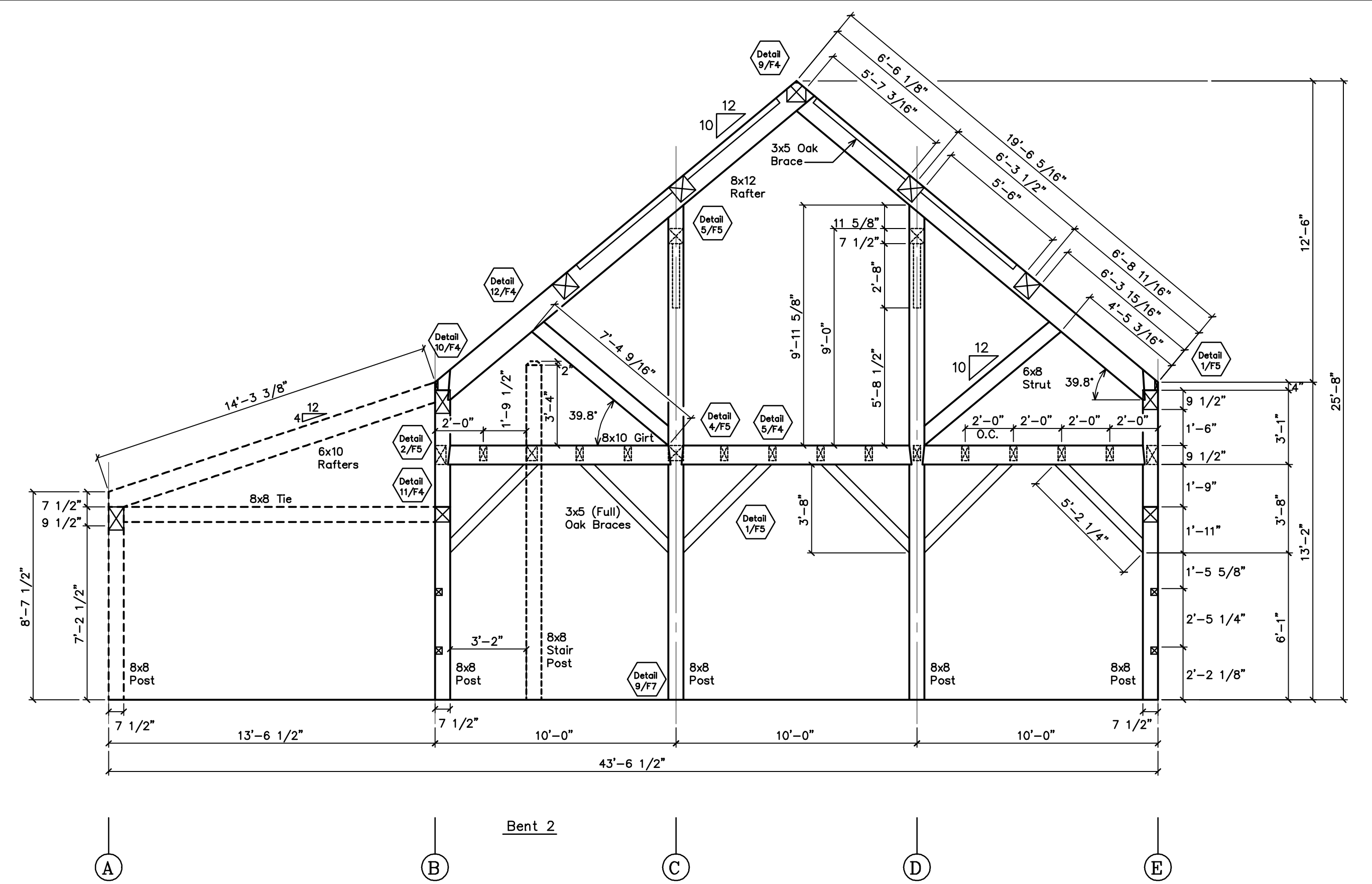
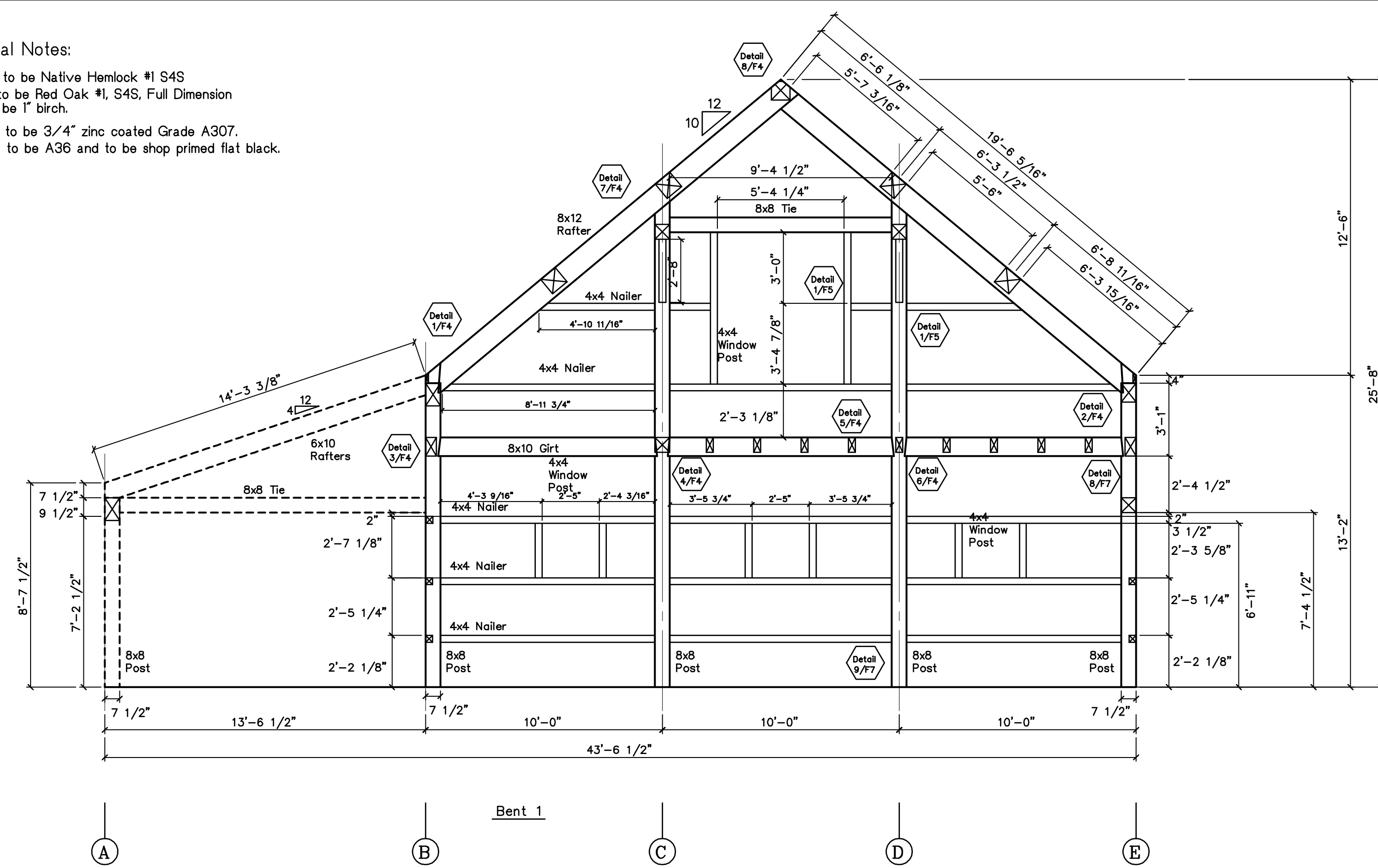
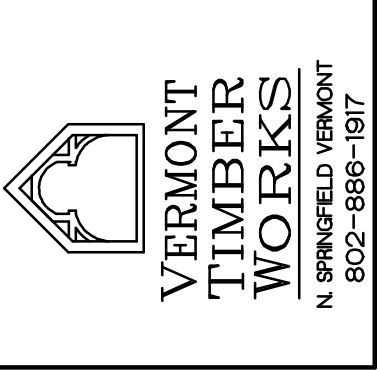


General Notes:  
 Timbers to be Native Hemlock #1 S4S  
 Braces to be Red Oak #1, S4S, Full Dimension  
 Pegs to be 1" birch.  
 All Bolts to be 3/4" zinc coated Grade A307.  
 All Steel to be A36 and to be shop primed flat black.



REVISIONS	BY
9/6/06	FJZ
9/19/06	FJZ

RED LINE CHECK  
 BY: DATE:



SHOP DRAWINGS  
 Post Plan  
 Bents 1 & 2  
 Perspectives

For Fabrication

PROJECT: Sands Barn  
 Dublin, NH

DRAWN: D.F. CHECKED:  
 DATE: 2/3/06  
 SCALE: 1/4"=1'-0"  
 JOB NO.:  
 SHEET  
 F-1  
 OF SHEETS