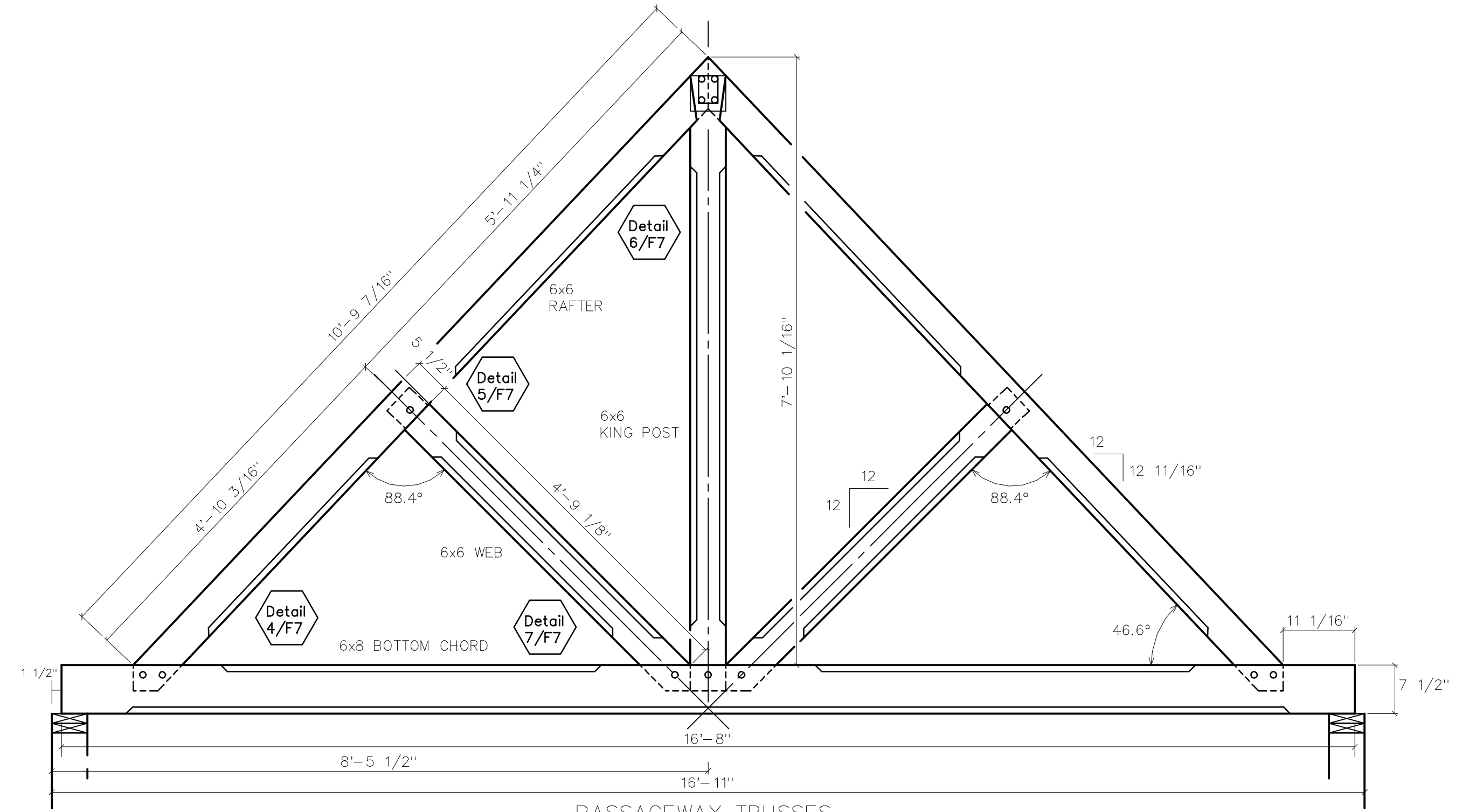
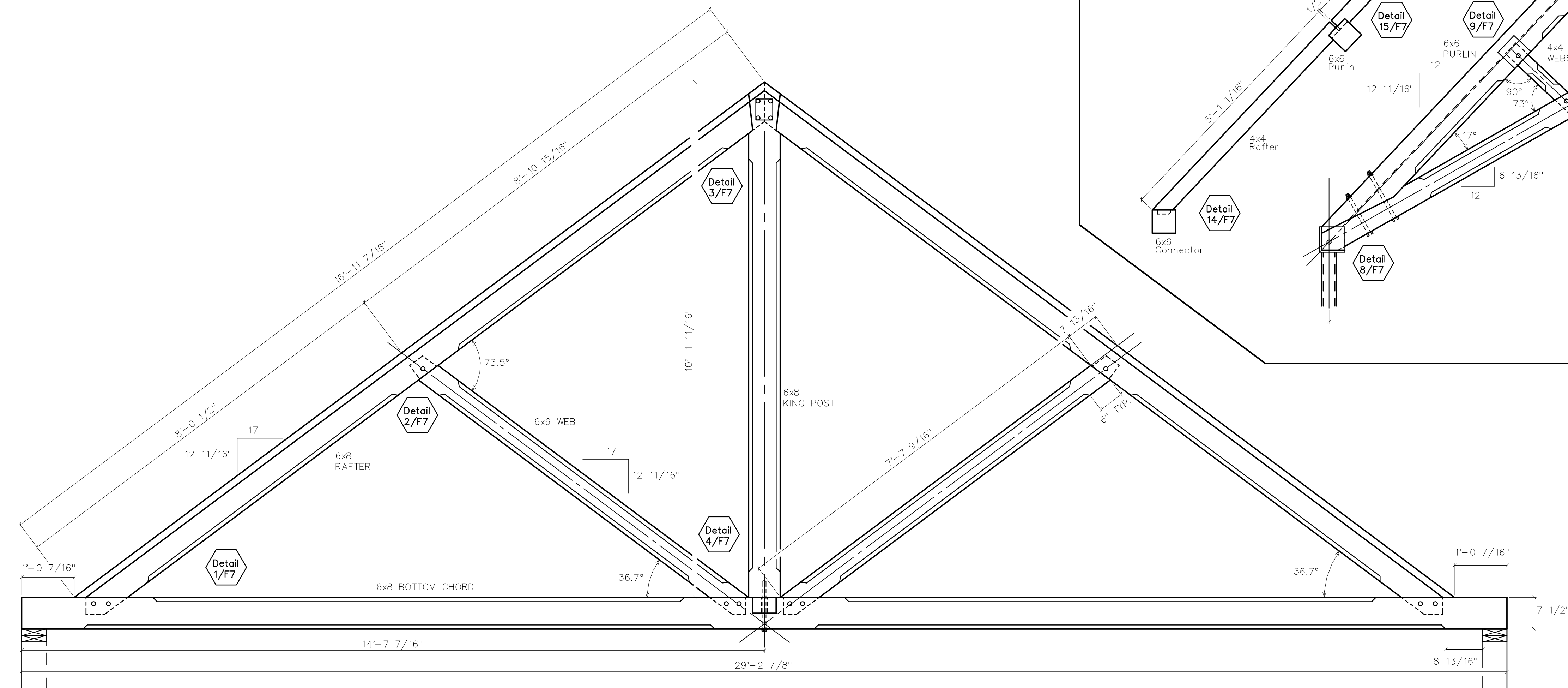


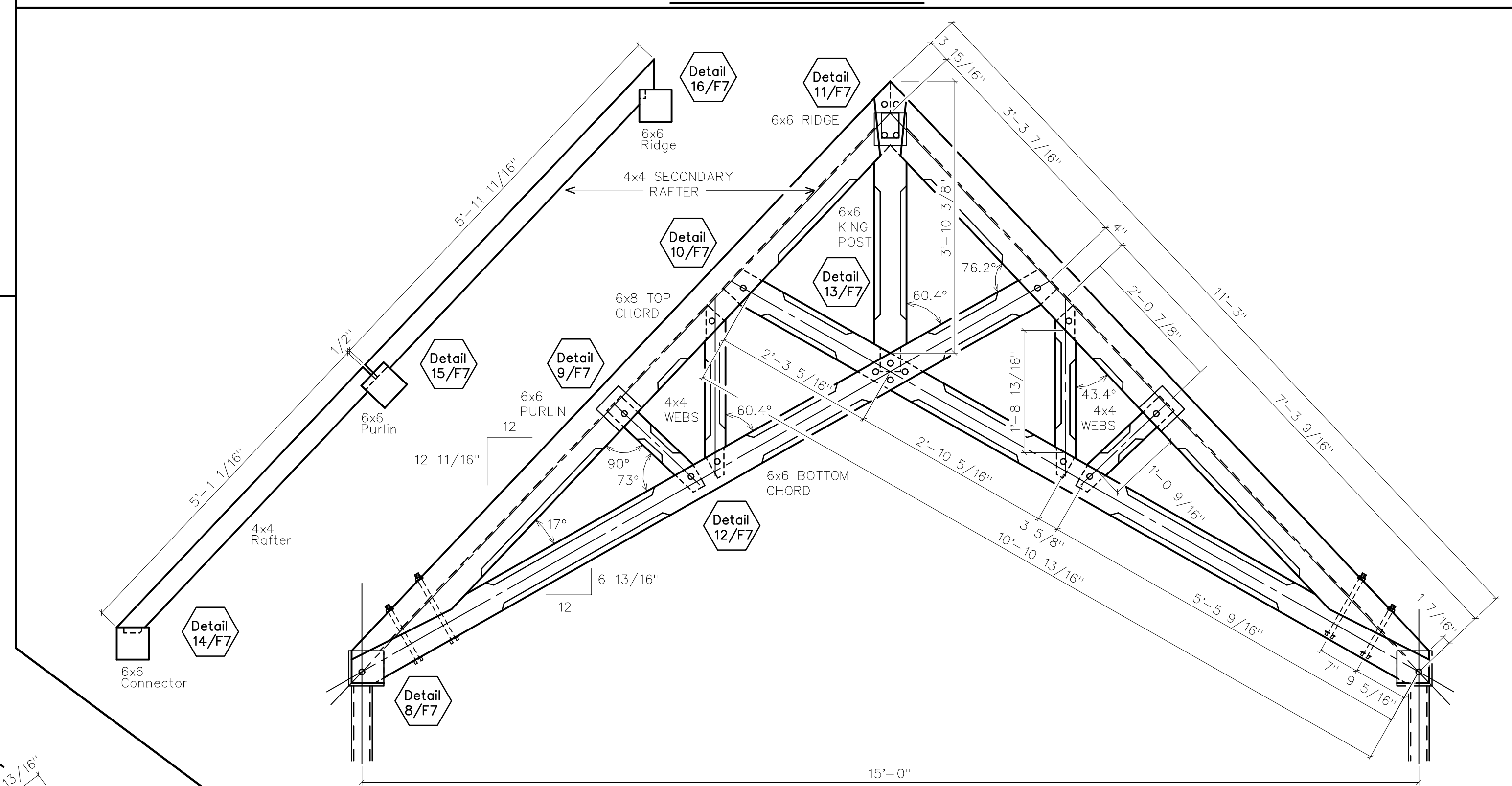
COLUMBARIUM HALF TRUSSES



PASSAGWAY TRUSSES

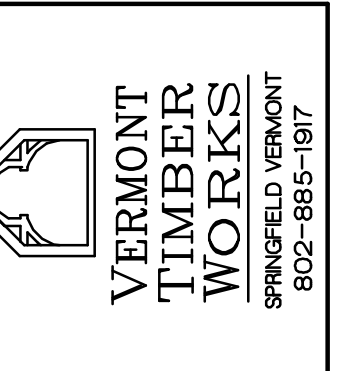


COLUMBARIUM FULL TRUSS



ENTRY TRUSSES

REVISIONS	BY
4/15/00	00



SHOP DRAWINGS
TRUSSES D-I

PROJECT: Saint Catherine's Church
Westford Mass.

DRAWN : D.F.	CHECKED :
DATE : 4/8/00	
SCALE : 3/4"=1'-0"	
JOB NO. :	
SHEET	
F-5	
OF	SHEETS