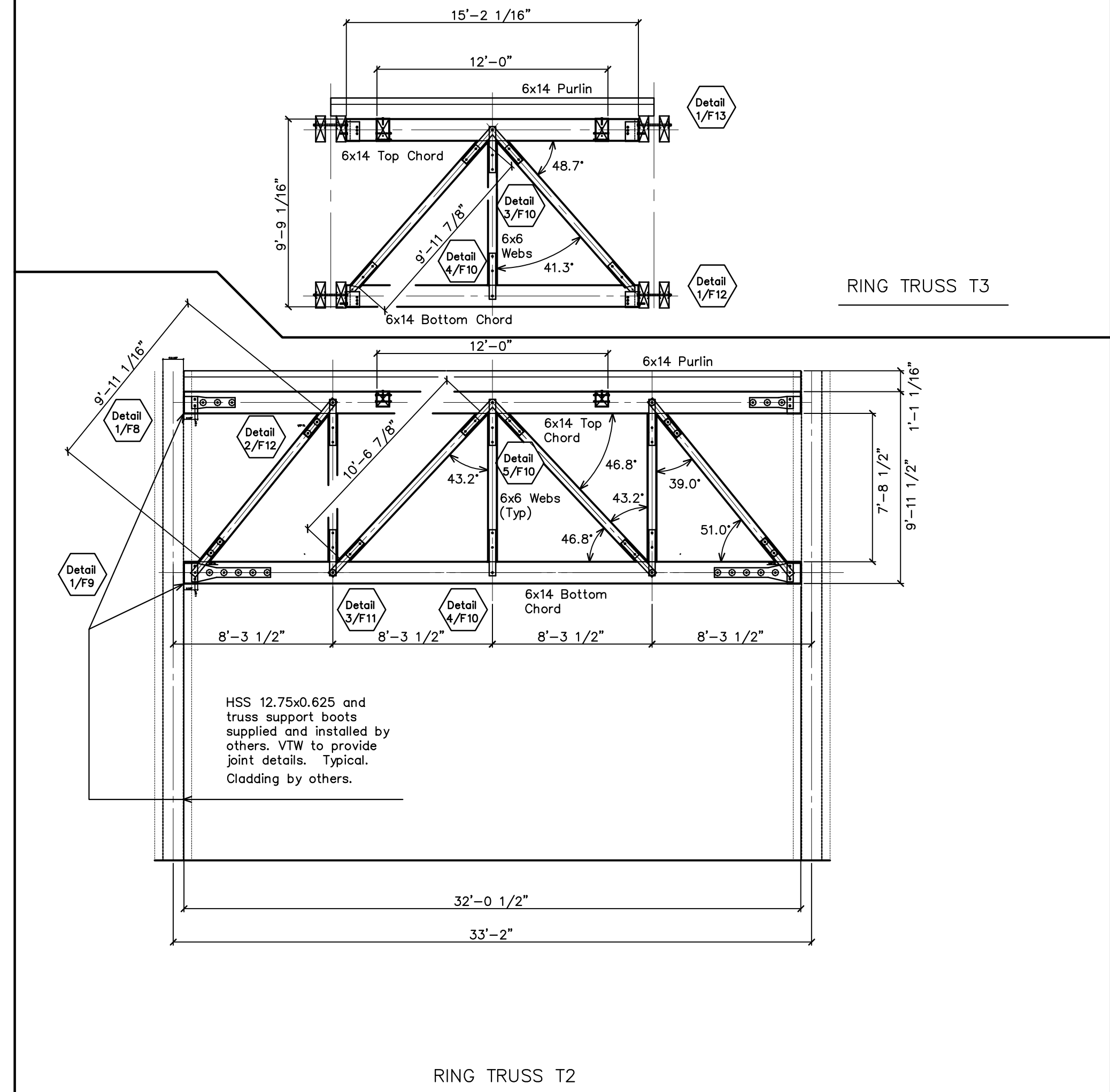
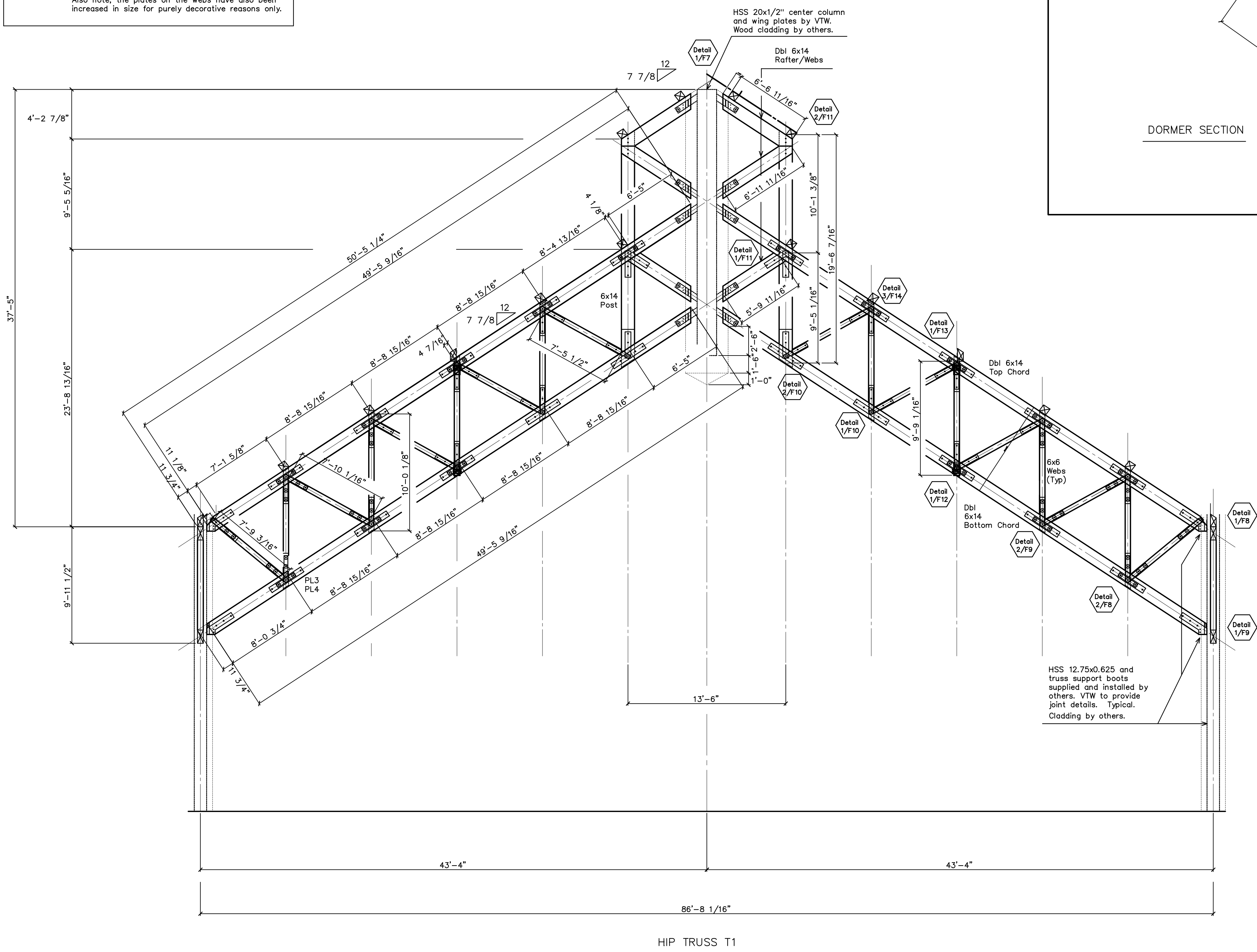


Note: The plates shown with dot-dash lines are decorative only and appear on the outside of the 6x14 top and bottom chords. These plates will result in a change order by VTW. Also note, the plates on the webs have also been increased in size for purely decorative reasons only.



REVISIONS	BY
9/11/07	PJZ
11/2/07	PJZ

RED LINE CHECK
BY: DATE:

SHOP DRAWINGS
Truss Elevations

THE ENGINEERING ADVICE, OPINIONS, AND RECOMMENDATIONS IN THIS DRAWING ARE THOSE OF THE LICENSED PROFESSIONAL ENGINEER WHOSE STAMP APPEARS HEREIN, AND NOT OF VERMONT TIMBER WORKS, INC.

PROJECT: Spruce Peak Lodge Heavy Timber Frame Stowe, Vermont

DRAWN : PJZ
CHECKED :
DATE : 8/31/07
SCALE : 3/16"=1'-0"
JOB NO. :
SHEET F-3 OF SHEETS

COPYRIGHT VERMONT TIMBER WORKS, INC. THIS DRAWING MAY BE UTILIZED ONLY FOR THE WORK SHOWN THEREIN AT THE SITE SPECIFIED. ANY OTHER USE OF THIS DRAWING INCLUDING, WITHOUT LIMITATION, ANY REPRODUCTION OR ALTERATION OF THIS DRAWING WITHOUT THE PRIOR WRITTEN APPROVAL OF VERMONT TIMBER WORKS, INC. IS A VIOLATION OF LAW AND PROHIBITED.