

REVISIONS	BY
9/9/04	

General Notes:

Timbers to be Southern Yellow Pine #1 & Better Rough  
 Posts to be Native Red Oak Rough

One coat of stain or oil to be shop applied  
 on all sides.

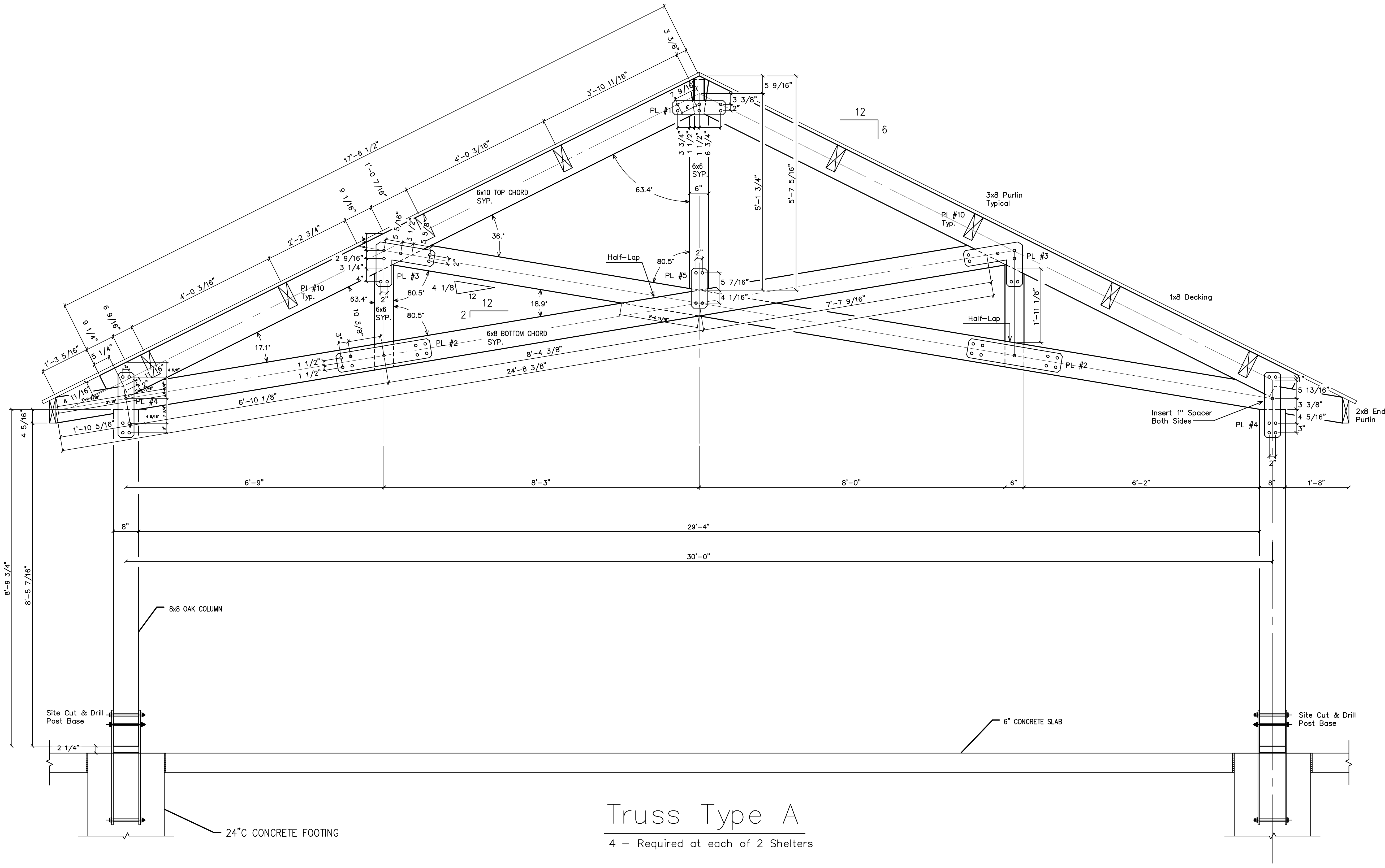
All Bolts to be 3/4" zinc coated.

All Steel to be shop primed flat black.

Post Bases By Others



SHOP DRAWINGS  
 Truss Type "A"



Truss Type A

4 - Required at each of 2 Shelters

PROJECT: Fort Harrison State Park  
 Picnic Shelter

DRAWN :	CHECKED :
D.F.	
DATE :	7/2/04
SCALE :	3/4" = 1'-0"
JOB NO. :	
SHEET	
F-2	
From Sheets:	S403 S405
	S404
OF	SHEETS