

| REVISIONS | BY |
|-----------|----|
| 9/9/04 | |
| | |
| | |
| | |
| | |
| | |

General Notes:

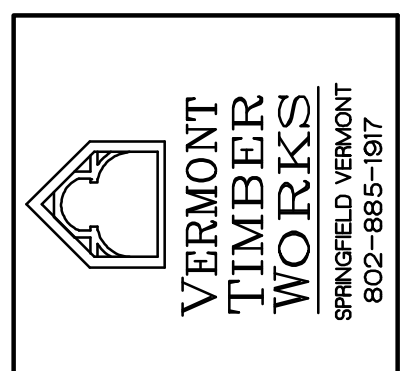
Timbers to be Southern Yellow Pine #1 & Better Rough
Posts to be Native Red Oak Rough

One coat of stain or oil to be shop applied
on all sides.

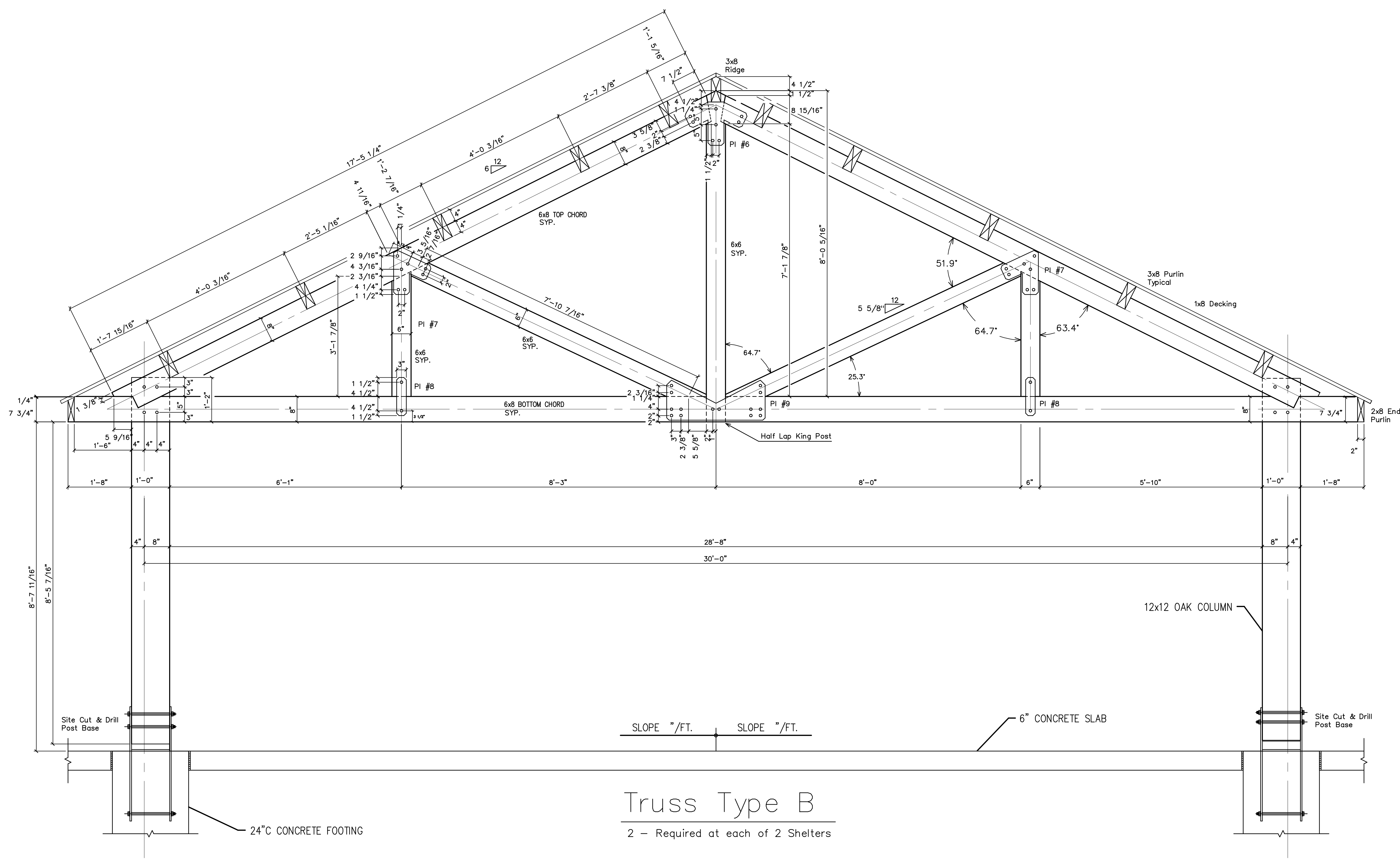
All Bolts to be 3/4" zinc coated.

All Steel to be shop primed flat black.

Post Bases By Others



SHOP DRAWINGS
Truss Type "B"



Truss Type B
2 - Required at each of 2 Shelters

PROJECT: Fort Harrison State Park
Picnic Shelter

| | |
|-----------------------------------|-----------|
| DRAWN : D.F. | CHECKED : |
| DATE : 7/2/04 | |
| SCALE : 3/4" = 1'-0" | |
| JOB NO. : | |
| SHEET F-3 | |
| From Sheets: S403 S405 S404 | |
| OF | SHEETS |