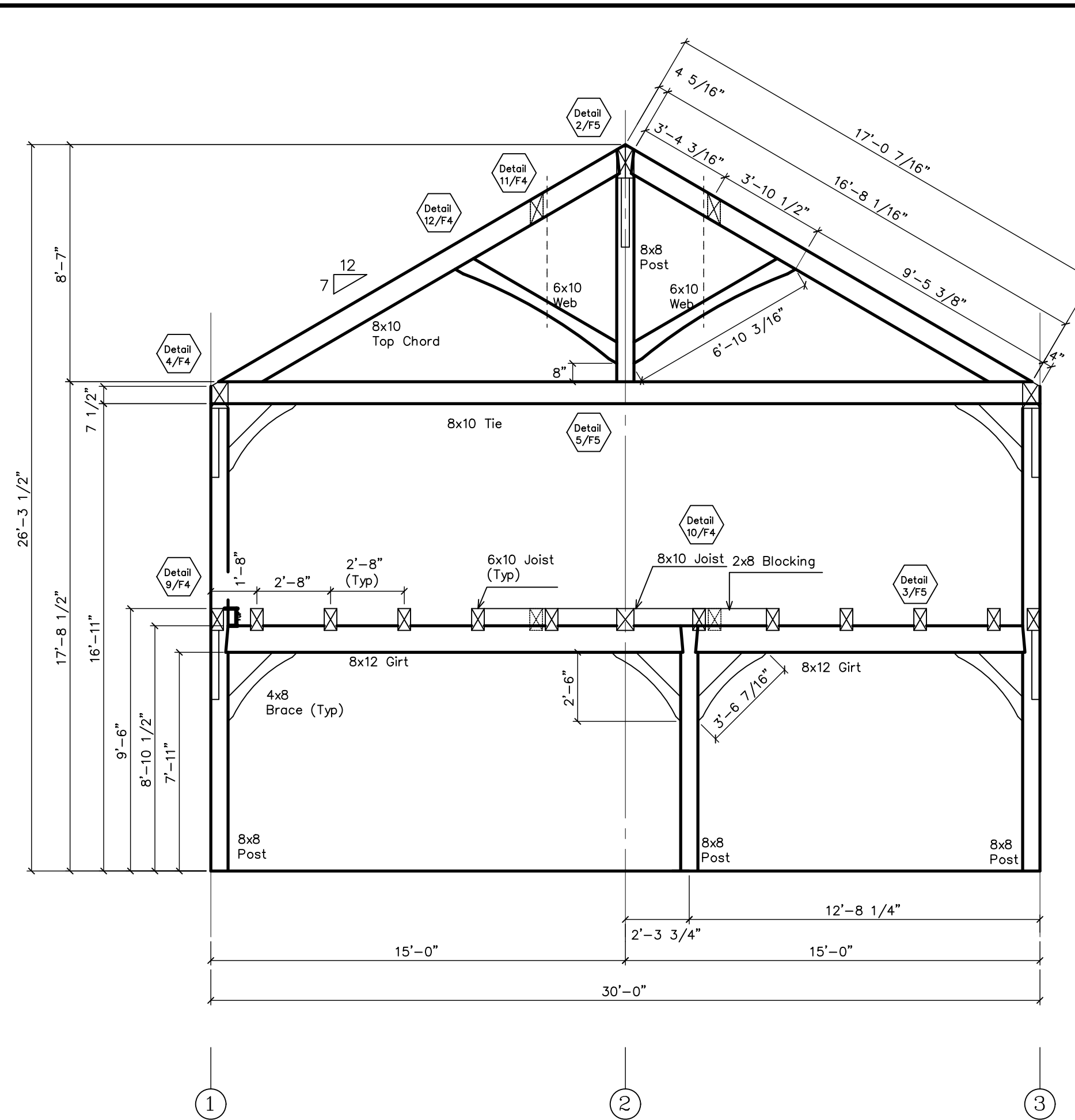
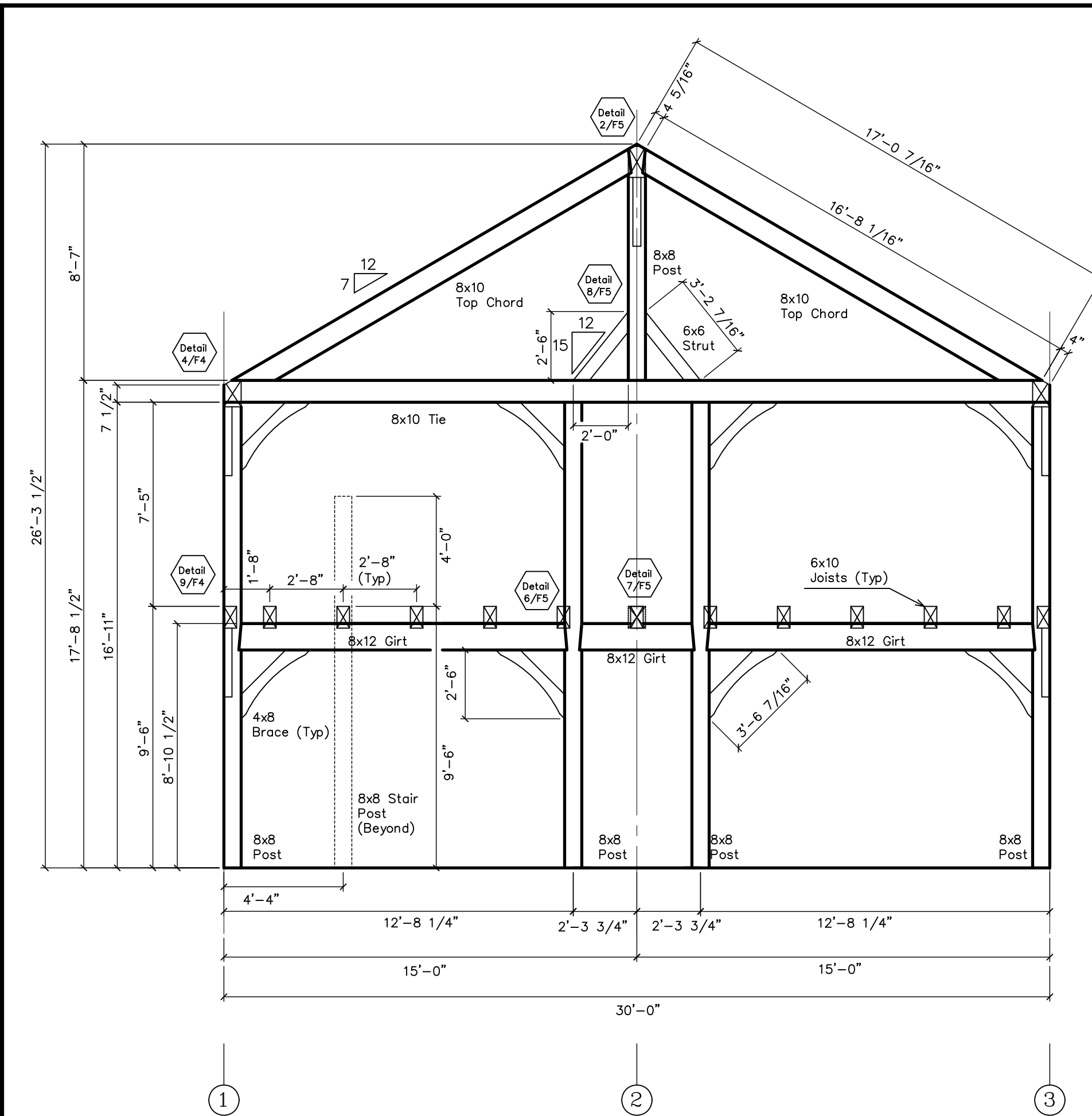


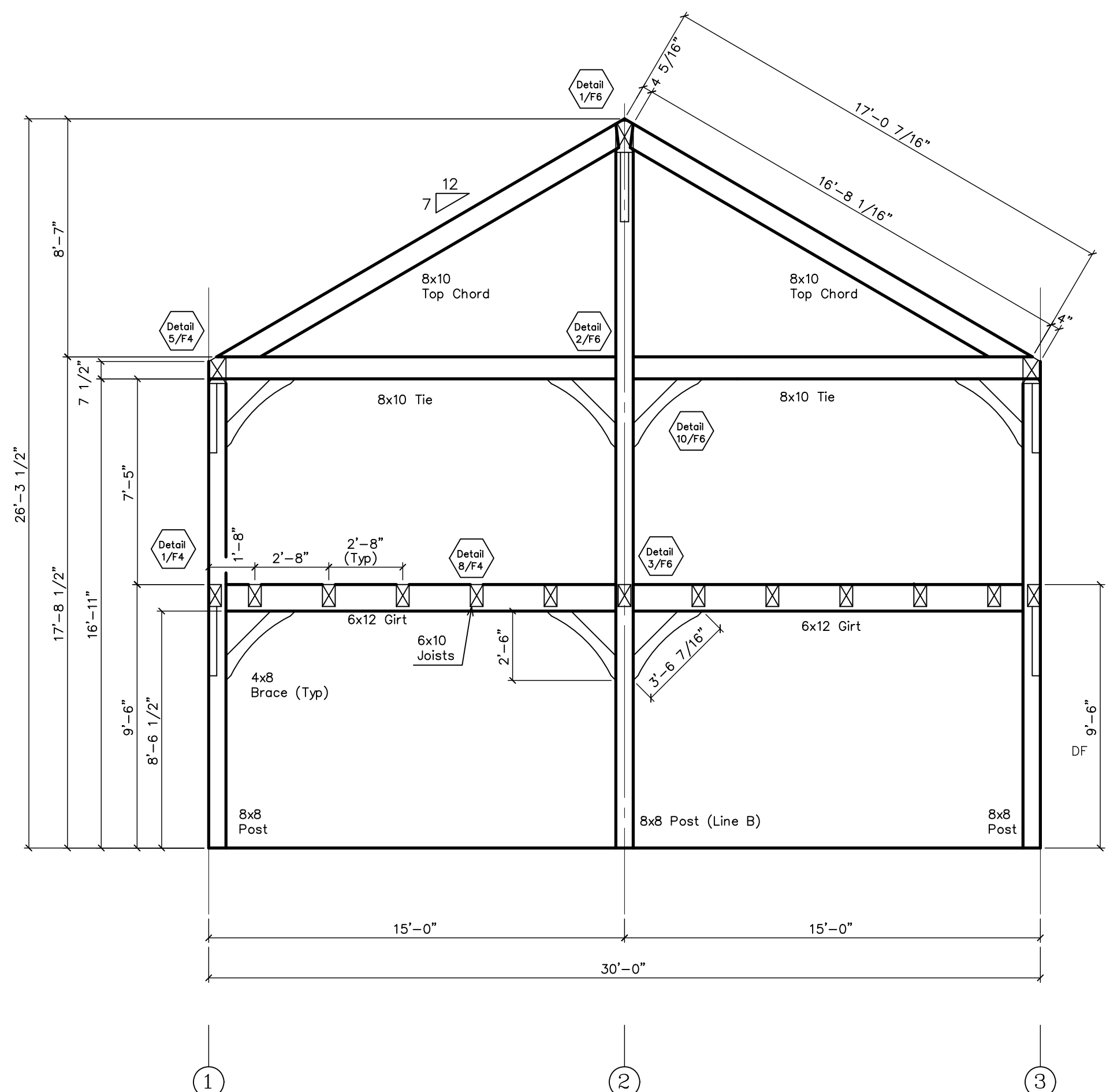
BENT ELEVATIONS LINES A



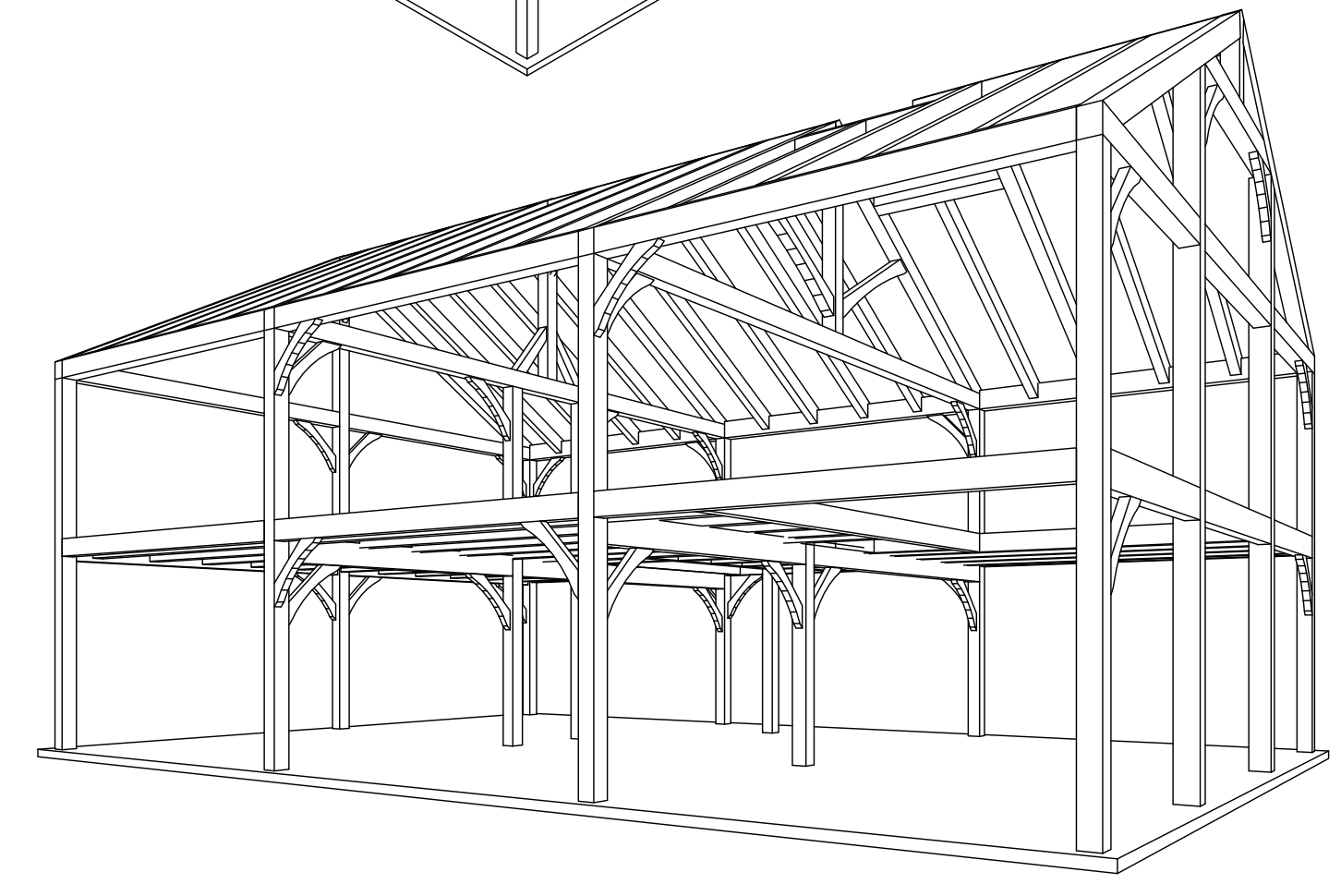
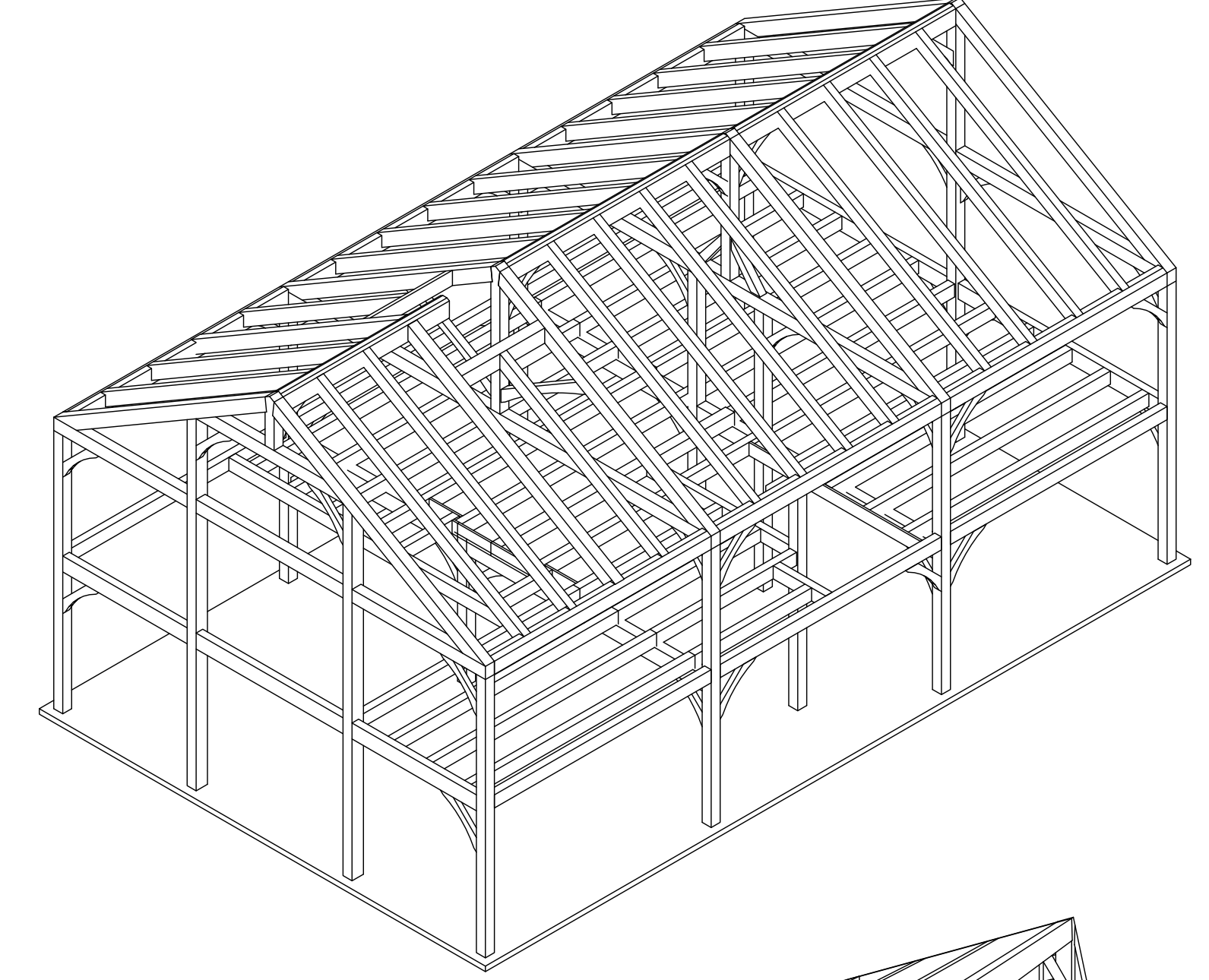
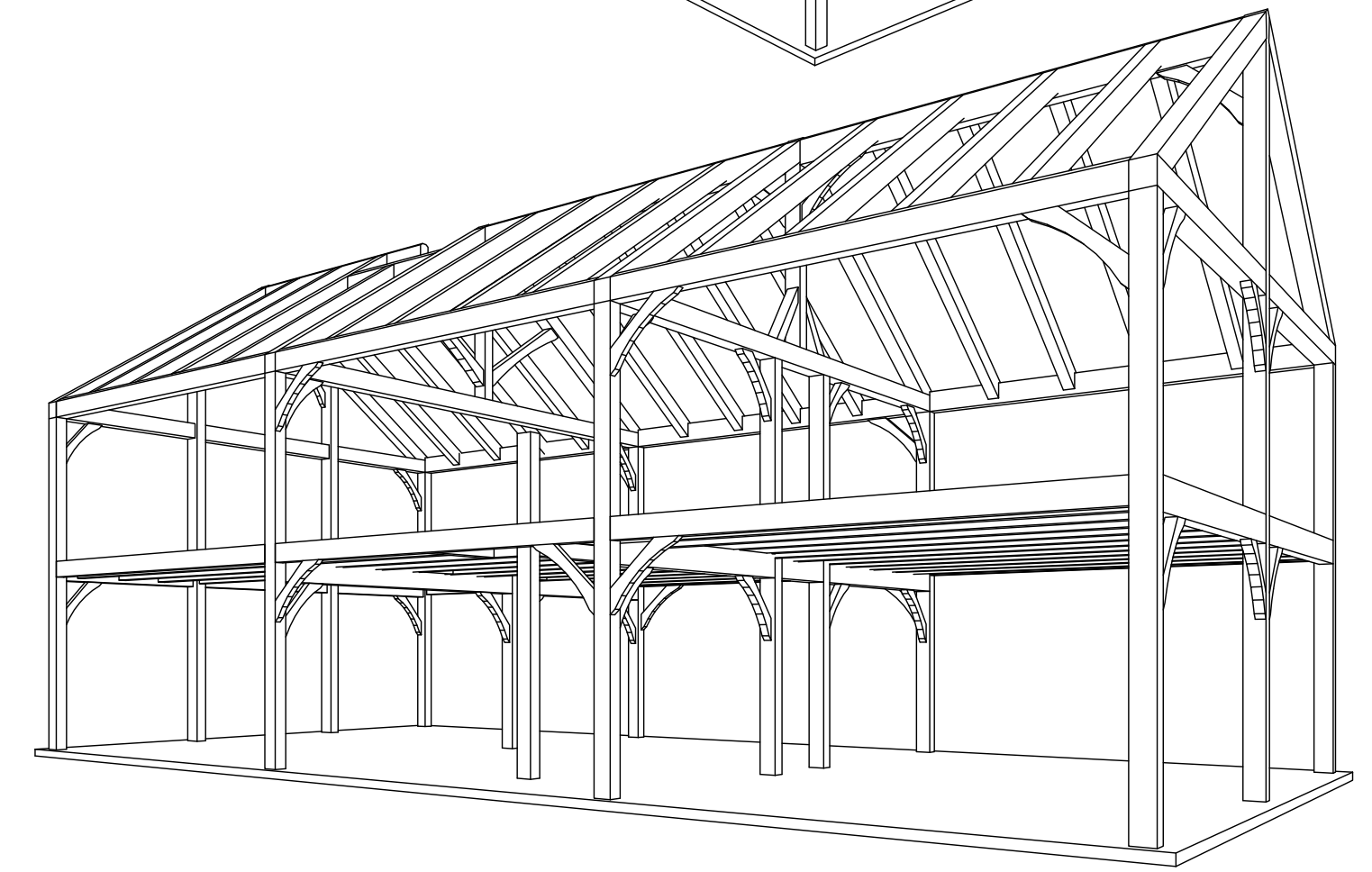
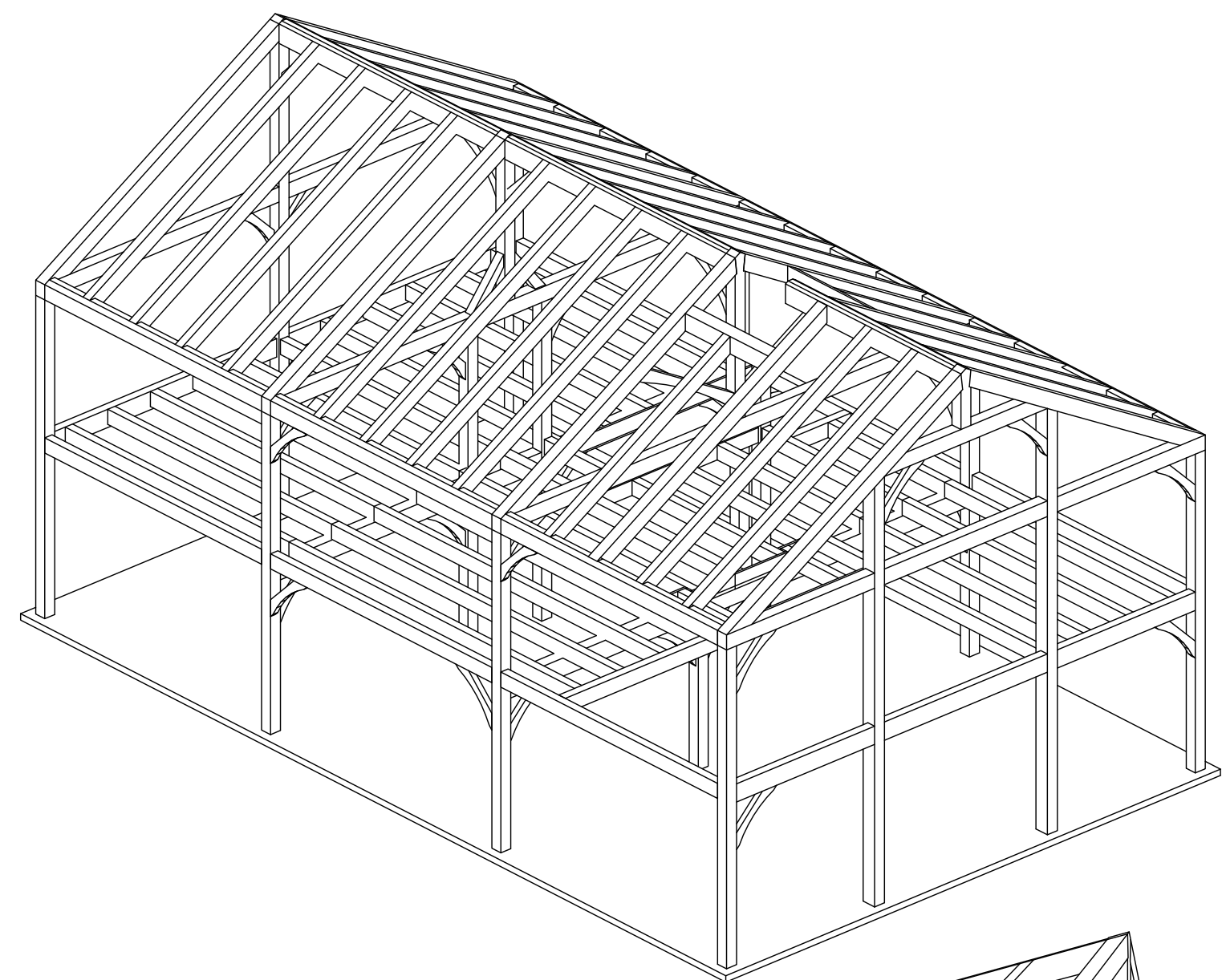
BENT ELEVATION LINE B



BENT ELEVATION LINE C



BENT ELEVATION LINE D



REVISIONS	BY
5/11/07	PJZ
5/16/07	PJZ
5/30/07	PJZ

RED LINE CHECK  
BY: DATE:

SHOP DRAWINGS  
Bent Elevations  
Perspectives

THE ENGINEERING ADVICE, OPINIONS, AND RECOMMENDATIONS IN THIS DRAWING ARE THOSE OF THE LICENSED PROFESSIONAL ENGINEER WHOSE STAMP APPEARS HEREIN, AND NOT OF VERMONT TIMBER WORKS, INC.

PROJECT:  
Zimmerman Residence  
Kennebunkport, Maine

DRAWN : PJZ  
CHECKED :  
DATE : 5/3/07  
SCALE : 1/4" = 1'-0"  
JOB NO. :  
SHEET

F-2  
OF SHEETS  
COPYRIGHT VERMONT TIMBER WORKS, INC. THIS DRAWING MAY BE UTILIZED ONLY FOR THE WORK SHOWN THEREIN AT THE SITE SPECIFIED. ANY OTHER USE OF THIS DRAWING, INCLUDING, WITHOUT LIMITATION, ANY REPRODUCTION OR ALTERATION OF THIS DRAWING WITHOUT THE PRIOR WRITTEN APPROVAL OF VERMONT TIMBER WORKS, INC. IS A VIOLATION OF LAW AND PROHIBITED.